

# School Board of Brevard County

2700 Judge Fran Jamieson Way • Viera, FL 32940-6699  
Dr. Mark Rendell, Ed.D., Superintendent



September 6, 2023

Ms. Alexandra Bernard  
Principal Planner  
City of Palm Bay  
Growth Management Department  
120 Malabar Road SE  
Palm Bay, Florida 32907

**RE: Proposed Palm Bay Pointe - West Development  
School Capacity Availability Determination Letter SCADL-2023-17**

Dear Ms. Alexandra Bernard,

We received a completed *School Facility Planning & Concurrency Application* for the referenced development. The subject property is Tax Account 3027881 (Parcel ID: 30-37-04-00-751), a portion of Tax Account 3011110 (Parcel ID: 30-37-04-00-4) and a portion of Tax Account 3000215 (Parcel ID: 30-37-04-00-1) containing approximately 30.0 acres in the City of Palm Bay, Brevard County, Florida. The proposed development includes 668 multi-family units. The School Impact Analysis of this proposed development has been undertaken and the following information is provided for your use.

The calculations used to analyze the prospective student impact are consistent with the methodology outlined in Section 13.2 and Amended Appendix "A"-School District Student Generation Multiplier (approved April 11, 2022) of the *Interlocal Agreement for Public School Facility Planning & School Concurrency (ILA-2014)*. The following capacity analysis is performed using capacities/projected students as shown in the *Brevard County Public Schools Financially Feasible Plan for 2022-23 to 2027-28* which is attached for reference.

Multi-Family Homes	668		
Students Generated	Student Generation Rates	Calculated Students Generated	Rounded Number of Students Generated
Elementary	0.11	73.48	73
Middle	0.02	13.36	13
High	0.05	33.40	33
Total	0.18		119

Planning & Project Management  
Facilities Services  
Phone: (321) 633-1000 x11418 • FAX: (321) 633-4646



An Equal Opportunity Employer

**FISH Capacity (including relocatable classrooms) from the  
Financially Feasible Plan (FFP) Data and Analysis for School Years 2023-24 to  
2027-28**

School	2023-24	2024-25	2025-26	2026-27	2027-28
Sunrise	913	913	935	1,023	1,067
Southwest	1,230	1,230	1,230	1,289	1,289
Bayside	2,263	2,263	2,263	2,263	2,382

**Projected Student Membership**

School	2023-24	2024-25	2025-26	2026-27	2027-28
Sunrise	767	836	908	1,004	1,067
Southwest	920	1,024	1,127	1,174	1,285
Bayside	1,885	2,023	2,099	2,175	2,371

**Students Generated by Newly Issued SCADL Reservations Since FFP**

School	2023-24	2024-25	2025-26	2026-27	2027-28
Sunrise	-	-	-	-	-
Southwest	13	13	13	13	13
Bayside	21	21	21	21	21

**Cumulative Students Generated by  
Proposed Development**

School	2023-24	2024-25	2025-26	2026-27	2027-28
Sunrise	-	18	37	55	73
Southwest	-	3	7	10	13
Bayside	-	8	17	25	33

**Total Projected Student Membership (includes  
Cumulative Impact of Proposed Development)**

School	2023-24	2024-25	2025-26	2026-27	2027-28
Sunrise	767	854	945	1,059	1,140
Southwest	933	1,040	1,147	1,197	1,311
Bayside	1,906	2,052	2,137	2,221	2,425

**Projected Available Capacity =  
FISH Capacity - Total Projected Student Membership**

School	2023-24	2024-25	2025-26	2026-27	2027-28
Sunrise	146	59	(10)	(36)	(73)
Southwest	297	190	83	92	(22)
Bayside	357	211	126	42	(43)

At this time Sunrise Elementary School, Southwest Middle School and Bayside High School are not projected to have enough capacity for the total of projected and potential students from the Palm Bay Pointe - West development. Because there is a shortfall of the available capacity in the concurrency service areas of the Palm Bay Pointe - West development, the capacity of adjacent concurrency service areas must be considered. The adjacent elementary school concurrency service areas are Columbia Elementary School, Westside Elementary School and Port Malabar Elementary School. The adjacent middle school concurrency service areas are

Stone Magnet Middle School and Central Middle School. The adjacent high school concurrency service areas are Heritage High School and Palm Bay Magnet High School. A table of capacities of the Adjacent Schools Concurrency Service Areas that could accommodate the impacts of the Palm Bay Pointe - West development is shown:

**FISH Capacity (including relocatable classrooms) from the  
Financially Feasible Plan (FFP) Data and Analysis for School Years 2023-24 to  
2027-28**

School	2023-24	2024-25	2025-26	2026-27	2027-28
Columbia	751	751	751	751	751
Central	1,514	1,514	1,514	1,514	1,514
Heritage	2,314	2,314	2,314	2,314	2,314

**Projected Student Membership**

School	2023-24	2024-25	2025-26	2026-27	2027-28
Columbia	512	531	522	538	538
Central	1,129	1,158	1,228	1,289	1,377
Heritage	2,055	2,065	2,057	2,099	2,171

**Students Generated by Newly Issued SCADL Reservations Since FFP**

School	2023-24	2024-25	2025-26	2026-27	2027-28
Columbia	-	-	-	-	-
Central	-	13	19	25	27
Heritage	-	23	33	43	46

**Cumulative Students Generated by  
Proposed Development**

School	2023-24	2024-25	2025-26	2026-27	2027-28
Columbia	-	18	37	55	73
Central	-	3	7	10	13
Heritage	-	8	17	25	33

**Total Projected Student Membership (includes  
Cumulative Impact of Proposed Development)**

School	2023-24	2024-25	2025-26	2026-27	2027-28
Columbia	512	549	559	593	611
Central	1,129	1,174	1,254	1,324	1,417
Heritage	2,055	2,096	2,107	2,167	2,250

**Projected Available Capacity =  
FISH Capacity - Total Projected Student Membership**

School	2023-24	2024-25	2025-26	2026-27	2027-28
Columbia	239	202	192	158	140
Central	385	340	260	190	97
Heritage	259	218	207	147	64

Considering the adjacent elementary school, middle school and high school concurrency service areas, there is sufficient capacity for the total projected student membership to accommodate the Palm Bay Pointe - West development.

This letter is the official **School Concurrency Availability Determination Letter (SCADL)** for the Palm Bay Pointe - West development in accordance with Section 13.2(e) of the *Interlocal Agreement for Public School Facility Planning and School Concurrency (ILA)*. This letter will become binding, and capacity will be reserved in Brevard Public Schools for the projected student membership impact of this development as of the date of this letter.

The School Capacity Reservation at the above schools is valid for 24 months from the date of this letter. At that time, if the project has not received the Certificate of Completion approval from The City of Palm Bay, a Time Extension application can be submitted to the School Board through The City of Palm Bay. A maximum of 2 additional years can be requested. If the final planning approval has not been completed after the 2-year Time Extension is granted, a new application for School Concurrency must be submitted.

Also, in accordance with Section 13.2(f) of the ILA, so that the school district can track capacity reservations, please provide notification:

1. When this residential development has received a Concurrency Evaluation Finding of Nondeficiency or functional equivalent.
2. The date the development order expires, is extended, or is revoked.
3. When the concurrency reservations become vested.
4. When the school impact fees have been paid.

We appreciate the opportunity to review this proposed project. Please let us know if you require additional information.

Sincerely,



Karen M. Black, AICP  
Manager – Facilities Planning & Intergovernmental Coordination  
Planning & Project Management, Facilities Services

Enclosure: *Brevard County Public Schools Financially Feasible Plan for 2022-23 to 2027-28*

Copy: Susan Hann, AICP, Assistant Superintendent of Facilities Services  
File SCADL-2023-17

David G. Lindemann, AICP, Director of Planning & Project Management, Facilities Services  
File SCADL-2023-17



# Brevard County Public Schools

## Financially Feasible Plan To Maintain Utilization Rates Lower than the **100%** Level of Service

### Data and Analysis for School Years 2022-23 to 2027-28



Summary				2022-23			2023-24			2024-25			2025-26			2026-27			2027-28		
Highest Utilization Elementary Schools:						93%			99%			100%			99%			99%			100%
Highest Utilization Middle Schools:						88%			88%			94%			92%			91%			100%
Highest Utilization Jr / Sr High Schools:						83%			83%			81%			78%			77%			76%
Highest Utilization High Schools:						107%			99%			97%			98%			100%			100%

School	Type	Grades	Utilization Factor	School Year 2022-23			School Year 2023-24			School Year 2024-25			School Year 2025-26			School Year 2026-27			School Year 2027-28		
				FISH Capacity	10/14/22 Membership	Total Capacity Utilization	Future FISH Capacity	Student Projection	Total Capacity Utilization	Future FISH Capacity	Student Projection	Total Capacity Utilization	Future FISH Capacity	Student Projection	Total Capacity Utilization	Future FISH Capacity	Student Projection	Total Capacity Utilization	Future FISH Capacity	Student Projection	Total Capacity Utilization

Elementary School Concurrency Service Areas																					
Allen	Elementary	PK-6	100%	751	598	80%	751	598	80%	751	635	85%	751	704	94%	751	720	96%	773	766	99%
Andersen	Elementary	K-6	100%	884	568	64%	884	568	64%	884	549	62%	884	537	61%	884	530	60%	884	501	57%
Apollo	Elementary	K-6	100%	902	731	81%	902	731	81%	902	749	83%	902	753	83%	902	736	82%	902	718	80%
Atlantis	Elementary	PK-6	100%	739	620	84%	739	620	84%	739	608	82%	739	596	81%	739	585	79%	739	572	77%
Audubon	Elementary	PK-6	100%	761	450	59%	761	450	59%	761	435	57%	761	422	55%	761	419	55%	761	426	56%
Cambridge	Elementary	PK-6	100%	787	495	63%	787	495	63%	787	511	65%	787	505	64%	787	510	65%	787	524	67%
Cape View	Elementary	PK-6	100%	570	305	54%	570	288	51%	570	309	54%	570	314	55%	570	315	55%	570	329	58%
Carroll	Elementary	K-6	100%	751	626	83%	751	633	84%	751	643	86%	751	623	83%	751	619	82%	751	628	84%
Challenger 7	Elementary	PK-6	100%	573	503	88%	573	503	88%	573	474	83%	573	462	81%	573	433	76%	573	413	72%
Columbia	Elementary	PK-6	100%	751	506	67%	751	512	68%	751	531	71%	751	522	70%	751	538	72%	751	538	72%
Coquina	Elementary	K-6	100%	711	560	79%	711	560	79%	711	565	79%	711	602	85%	711	590	83%	711	585	82%
Creel	Elementary	PK-6	100%	1,114	626	56%	1,114	660	59%	1,114	668	60%	1,114	668	60%	1,114	667	60%	1,114	658	59%
Croton	Elementary	PK-6	100%	795	488	61%	795	488	61%	795	514	65%	795	528	66%	795	542	68%	795	542	68%
Discovery	Elementary	PK-6	100%	980	643	66%	980	664	68%	980	675	69%	980	671	68%	980	720	73%	980	761	78%
Endeavour	Elementary	PK-6	100%	968	719	74%	968	750	77%	968	717	74%	968	707	73%	968	674	70%	968	671	69%
Enterprise	Elementary	K-6	100%	729	597	82%	729	597	82%	729	578	79%	729	552	76%	729	538	74%	729	529	73%
Fairglenn	Elementary	PK-6	100%	789	617	78%	789	617	78%	789	617	78%	789	632	80%	789	635	80%	789	625	79%
Gemini	Elementary	K-6	100%	711	468	66%	711	477	67%	711	465	65%	711	468	66%	711	455	64%	711	457	64%
Golfview	Elementary	PK-6	100%	777	441	57%	777	441	57%	777	460	59%	777	481	62%	777	489	63%	777	503	65%
Harbor City	Elementary	PK-6	100%	629	403	64%	629	405	64%	629	457	73%	629	474	75%	629	494	79%	629	509	81%
Holland	Elementary	PK-6	100%	605	432	71%	605	450	74%	605	451	75%	605	444	73%	605	442	73%	605	431	71%
Imperial Estates	Elementary	K-6	100%	729	659	90%	729	684	94%	729	712	98%	729	724	99%	751	742	99%	795	779	98%
Indianlantic	Elementary	K-6	100%	798	686	86%	798	686	86%	798	685	86%	798	671	84%	798	676	85%	798	651	82%
Jupiter	Elementary	PK-6	100%	930	729	78%	930	735	79%	930	801	86%	930	882	95%	974	940	97%	1,040	1,030	99%
Lockmar	Elementary	PK-6	100%	892	585	66%	892	585	66%	892	569	64%	892	552	62%	892	558	63%	892	559	63%
Longleaf	Elementary	PK-6	100%	790	631	80%	790	637	81%	790	613	78%	790	590	75%	790	563	71%	790	528	67%
Manatee	Elementary	K-6	100%	998	898	90%	998	910	91%	998	889	89%	998	845	85%	998	888	89%	998	881	88%
McAuliffe	Elementary	PK-6	100%	838	621	74%	838	621	74%	838	580	69%	838	568	68%	838	553	66%	838	528	63%
Meadowlane Intermediate	Elementary	3-6	100%	1,114	825	74%	1,114	825	74%	1,114	779	70%	1,114	773	69%	1,114	805	72%	1,114	843	76%
Meadowlane Primary	Elementary	K-6	100%	824	651	79%	824	666	81%	824	660	80%	824	630	76%	824	618	75%	824	613	74%
Mila	Elementary	PK-6	100%	707	435	62%	707	435	62%	707	439	62%	707	396	56%	707	383	54%	707	362	51%
Mims	Elementary	PK-6	100%	725	464	64%	725	464	64%	725	481	66%	725	512	71%	725	525	72%	725	513	71%
Oak Park	Elementary	PK-6	100%	968	505	52%	968	505	52%	968	471	49%	968	478	49%	968	475	49%	968	447	46%
Ocean Breeze	Elementary	PK-6	100%	654	554	85%	654	550	84%	654	542	83%	654	533	81%	654	534	82%	654	531	81%
Palm Bay Elem	Elementary	PK-6	100%	983	586	60%	983	613	62%	983	610	62%	983	627	64%	983	630	64%	983	636	65%
Pinewood	Elementary	PK-6	100%	569	521	92%	591	521	88%	591	541	92%	613	572	93%	613	598	98%	613	600	98%
Port Malabar	Elementary	PK-6	100%	852	640	75%	852	640	75%	852	683	80%	852	746	88%	852	760	89%	852	795	93%
Quest	Elementary	PK-6	100%	932	693	74%	932	693	74%	932	684	73%	932	681	73%	932	685	73%	932	697	75%
Riviera	Elementary	PK-6	100%	777	699	90%	777	714	92%	777	718	92%	799	780	98%	843	827	98%	887	866	98%
Roosevelt	Elementary	K-6	100%	599	288	48%	599	298	50%	599	269	45%	599	256	43%	599	239	40%	599	220	37%
Sabal	Elementary	PK-6	100%	785	500	64%	785	500	64%	785	503	64%	785	516	66%	785	534	68%	785	535	68%
Saturn	Elementary	PK-6	100%	998	649	65%	998	649	65%	998	677	68%	998	821	82%	998	794	80%	998	786	79%
Sea Park	Elementary	PK-6	100%	461	337	73%	461	337	73%	461	327	71%	461	321	70%	461	326	71%	461	329	71%
Sherwood	Elementary	PK-6	100%	609	459	75%	609	459	75%	609	458	75%	609	457	75%	609	450	74%	609	441	72%
Sunrise	Elementary	PK-6	100%	913	759	83%	913	767	84%	913	836	92%	935	908	97%	1,023	1,004	98%	1,067	1,067	100%
Suntree	Elementary	K-6	100%	755	600	79%	755	602	80%	755	561	74%	755	541	72%	755	516	68%	755	480	64%
Surfside	Elementary	K-6	100%	541	442	82%	541	442	82%	541	425	79%	541	418	77%	541	417	77%	541	407	75%
Tropical	Elementary	K-6	100%	910	669	74%	910	669	74%	910	614	67%	910	600	66%	910	572	63%	910	545	60%
Turner	Elementary	PK-6	100%	874	555	64%	874	564	65%	874	589	67%	874	647	74%	874	675	77%	874	691	79%
University Park	Elementary	PK-6	100%	811	487	60%	811	487	60%	811	545	67%	811	592	73%	811	642	79%	811	658	81%
Viera Elem	Elementary	K-6	100%	1,030	695	67%	1,030	717	70%	1,030	759	74%	1,030	857	83%	1,030	926	90%	1,074	1,061	99%
Westside	Elementary	K-6	100%	857	799	93%	857	846	99%	923	922	100%	989	974	98%	1,033	988	96%	1,099	1,100	100%
Williams	Elementary	PK-6	100%	715	451	63%	715	450	63%	715	443	62%	715	414	58%	715	411	57%	715	415	58%
Elementary Totals				42,215	30,468		42,237	30,778		42,303	30,996		42,435	31,549		42,677	31,905		43,007	32,280	

				School Year 2022-23			School Year 2023-24			School Year 2024-25			School Year 2025-26			School Year 2026-27			School Year 2027-28		
School	Type	Grades	Utilization Factor	FISH Capacity	10/14/22 Membership	Total Capacity Utilization	Future FISH Capacity	Student Projection	Total Capacity Utilization	Future FISH Capacity	Student Projection	Total Capacity Utilization	Future FISH Capacity	Student Projection	Total Capacity Utilization	Future FISH Capacity	Student Projection	Total Capacity Utilization	Future FISH Capacity	Student Projection	Total Capacity Utilization
Middle School Concurrency Service Areas																					
Central	Middle	7-8	90%	1,514	1,129	75%	1,514	1,129	75%	1,514	1,158	76%	1,514	1,228	81%	1,514	1,289	85%	1,514	1,377	91%
DeLaura	Middle	7-8	90%	960	842	88%	960	844	88%	960	902	94%	960	820	85%	960	789	82%	960	826	86%
Hoover	Middle	7-8	90%	680	505	74%	680	505	74%	680	534	79%	680	574	84%	680	577	85%	680	588	86%
Jackson	Middle	7-8	90%	660	550	83%	660	550	83%	660	545	83%	660	538	82%	660	555	84%	660	588	89%
Jefferson	Middle	7-8	90%	873	608	70%	873	608	70%	873	600	69%	873	609	70%	873	563	64%	873	548	63%
Johnson	Middle	7-8	90%	1,064	610	57%	1,064	610	57%	1,064	650	61%	1,064	698	66%	1,064	753	71%	1,064	825	78%
Kennedy	Middle	7-8	90%	869	671	77%	869	671	77%	869	687	79%	869	670	77%	869	669	77%	869	677	78%
Madison	Middle	7-8	90%	781	446	57%	781	453	58%	781	484	62%	781	452	58%	781	476	61%	781	593	76%
McNair	Middle	7-8	90%	616	365	59%	616	369	60%	616	346	56%	616	354	57%	616	337	55%	616	347	56%
Southwest	Middle	7-8	90%	1,230	920	75%	1,230	920	75%	1,230	1,024	83%	1,230	1,127	92%	1,289	1,174	91%	1,289	1,285	100%
Stone	Middle	7-8	90%	1,076	668	62%	1,076	708	66%	1,076	799	74%	1,076	823	76%	1,076	890	83%	1,076	977	91%
Middle Totals				10,323	7,314		10,323	7,367		10,323	7,729		10,323	7,893		10,382	8,072		10,382	8,631	
Junior / Senior High School Concurrency Service Areas																					
Cocoa	Jr / Sr High	PK, 7-12	90%	2,097	1,545	74%	2,097	1,536	73%	2,097	1,555	74%	2,097	1,525	73%	2,097	1,518	72%	2,097	1,470	70%
Cocoa Beach	Jr / Sr High	7-12	90%	1,445	983	68%	1,445	1,000	69%	1,445	1,000	69%	1,445	941	65%	1,445	928	64%	1,445	867	60%
Space Coast	Jr / Sr High	7-12	90%	1,852	1,534	83%	1,852	1,534	83%	1,852	1,505	81%	1,852	1,450	78%	1,852	1,428	77%	1,852	1,402	76%
Jr / Sr High Totals				5,394	4,062		5,394	4,070		5,394	4,060		5,394	3,916		5,394	3,874		5,394	3,739	
Senior High School Concurrency Service Areas																					
Astronaut	High	9-12	95%	1,451	1,109	76%	1,451	1,109	76%	1,451	1,123	77%	1,451	1,129	78%	1,451	1,164	80%	1,451	1,158	80%
Bayside	High	9-12	95%	2,263	1,851	82%	2,263	1,885	83%	2,263	2,023	89%	2,263	2,099	93%	2,263	2,175	96%	2,382	2,371	100%
Eau Gallie	High	PK, 9-12	95%	2,221	1,582	71%	2,221	1,582	71%	2,221	1,597	72%	2,221	1,625	73%	2,221	1,631	73%	2,221	1,693	76%
Heritage	High	9-12	95%	2,314	2,033	88%	2,314	2,055	89%	2,314	2,065	89%	2,314	2,057	89%	2,314	2,099	91%	2,314	2,171	94%
Melbourne	High	9-12	95%	2,370	2,245	95%	2,370	2,245	95%	2,370	2,245	95%	2,370	2,248	95%	2,370	2,284	96%	2,370	2,345	99%
Merritt Island	High	PK, 9-12	95%	1,962	1,546	79%	1,962	1,546	79%	1,962	1,512	77%	1,962	1,457	74%	1,962	1,437	73%	1,962	1,454	74%
Palm Bay	High	PK, 9-12	95%	2,657	1,483	56%	2,657	1,495	56%	2,657	1,581	60%	2,657	1,683	63%	2,657	1,704	64%	2,657	1,700	64%
Rockledge	High	9-12	95%	1,836	1,559	85%	1,836	1,559	85%	1,836	1,640	89%	1,836	1,699	93%	1,836	1,693	92%	1,836	1,620	88%
Satellite	High	PK, 9-12	95%	1,527	1,518	99%	1,551	1,536	99%	1,551	1,433	92%	1,551	1,413	91%	1,551	1,359	88%	1,551	1,299	84%
Titusville	High	9-12	95%	1,813	1,313	72%	1,813	1,333	74%	1,813	1,335	74%	1,813	1,351	75%	1,813	1,316	73%	1,813	1,322	73%
Viera	High	PK, 9-12	95%	2,141	2,289	107%	2,474	2,319	94%	2,474	2,391	97%	2,474	2,417	98%	2,569	2,579	100%	2,664	2,660	100%
High Totals				22,555	18,528		22,912	18,664		22,912	18,945		22,912	19,178		23,007	19,441		23,221	19,793	
Schools of Choice (Not Concurrency Service Areas)																					
Freedom 7	Elementary	K-6	100%	475	403	85%	475	414	87%	475	414	87%	475	414	87%	475	414	87%	475	414	87%
Stevenson	Elementary	K-6	100%	569	506	89%	569	508	89%	569	508	89%	569	508	89%	569	508	89%	569	508	89%
South Lake	Elementary	K-6	100%	481	434	90%	657	453	69%	657	471	72%	657	489	74%	657	507	77%	657	529	81%
West Melbourne	Elementary	K-6	100%	618	549	89%	618	552	89%	794	570	72%	794	588	74%	794	606	76%	794	624	79%
Edgewood	Jr / Sr High	7-12	90%	1,077	938	87%	1,077	950	88%	1,077	950	88%	1,077	950	88%	1,077	950	88%	1,077	950	88%
West Shore	Jr / Sr High	7-12	90%	1,264	930	74%	1,264	950	75%	1,264	950	75%	1,264	950	75%	1,264	950	75%	1,264	950	75%
Schools of Choice				4,484	3,760		4,660	3,827		4,836	3,863		4,836	3,899		4,836	3,935		4,836	3,975	
Brevard Totals				84,971	64,132		85,526	64,706		85,768	65,593		85,900	66,435		86,296	67,227		86,840	68,418	

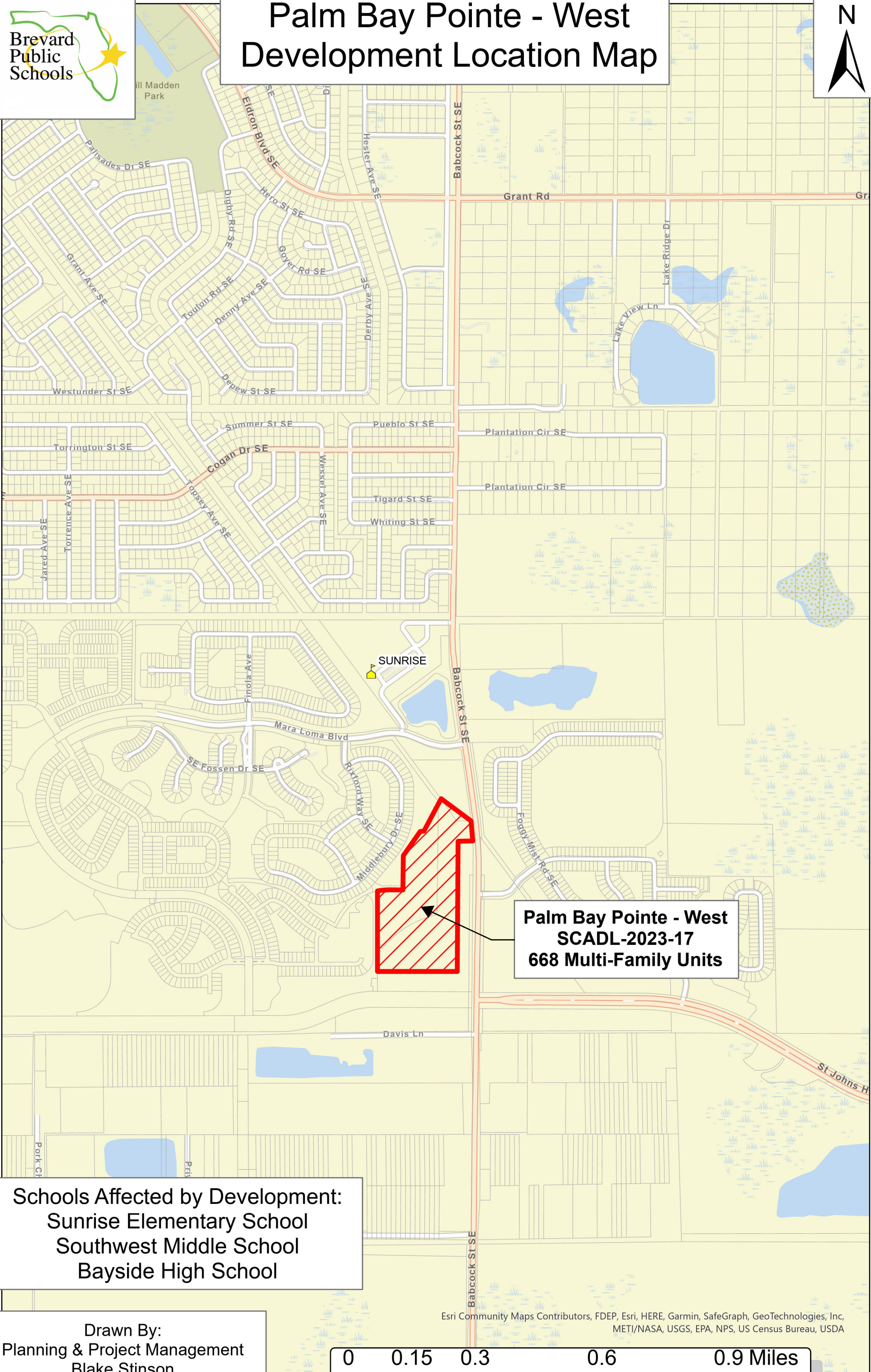
#### Notes

1. FISH Capacity is the sum of the factored permanent capacity and the factored relocatable capacity. Permanent and relocatable capacities for 2022-23 are reported from the FISH database as of October 14, 2022.
2. Student Membership is reported from the Fall Final Membership Count (10/14/2022).
3. Davis Demographics SchoolSite Enrollment Forecasting Extension for ArcGIS estimates future student populations by analyzing the following data:
  - Development Projections from Brevard County Local Government Jurisdictions
  - Brevard County School Concurrency Student Generation Multipliers (SGM)
  - Fall Membership student addresses and corresponding concurrency service areas
  - Student Mobility Rates / Cohort Survival Rates
  - Brevard County Birth rates by zip code
4. Davis Demographics estimates are then adjusted using the following factors:
  - PK (Pre-Kindergarten) and AH (daycare for students with infants) enrollment number are assumed to be constant
  - Current From/To attendance patterns are assumed to remain constant.
  - Nongecoded student addresses are assumed to continue in their attendance schools.
  - Charter School Growth.
5. In order to maintain utilization rates lower than the 100% Level of Service, Permanent Capacity and Relocatable Classrooms are assumed to add future student stations as necessary.
6. If student projections are accurate, the school board could add additional classroom capacity, implement attendance boundary changes, or add relocatable classrooms. A south area elementary school is planned for the future growth, but the exact timing hasn't been established.
  - If only relocatable classrooms are used for the next 5 years, the following changes would be needed to accommodate projected growth. These schools are being analyzed for the best options to accommodate additional students.
    - Primary relocatable classrooms (Grades K-3) = 18 student stations, Intermediate (Grades 4-8) relocatable classrooms = 22 student stations, and High School (Grades 9-12) relocatable classrooms = 25 student stations
  - For school year 2023-24, no additional capacity is needed.
  - For school year 2024-25, a total of 3 intermediate classrooms are projected for Westside Elementary School
  - For school year 2025-26, a total of 6 intermediate classrooms are projected for Pinewood (1), Riveria (1), Sunrise (1) and Westside (3) Elementary Schools.
  - For school year 2026-27, a total of 14 intermediate classrooms are projected for Imperial Estates (1), Jupiter (2), Riviera (2), Sunrise (4), Westside (2) Elementary Schools, and Southwest Middle School (3). 4 High School relocatable classrooms are proposed for Viera High School.
  - For school year 2027-28, a total of 15 intermediate classrooms are projected for Roy Allen (1), Imperial Estates (2), Jupiter (3), Riveria (2), Viera El (2), Sunrise (2), and Westside (3) Elementary Schools. 9 High School relocatable classrooms are proposed for Bayside (5) and Viera (4) High.
7. A classroom addition is planned for construction at Viera High School for 2023-24. The factored capacity is adjusted for the proposed 350 student stations.
8. A classroom addition is planned for construction at South Lake Elementary School for 2023-24. The factored capacity is adjusted for the proposed 176 student stations.
9. A classroom addition is planned for construction at West Melbourne School of Science for 2024-25. The factored capacity is adjusted for the proposed 176 student stations.
10. Capacity adjusted for Board approved addition of one relocatable each at Pinewood Elementary and Satellite High Schools for school year 2024-25 forward.





# Palm Bay Pointe - West Development Location Map



**Schools Affected by Development:**  
Sunrise Elementary School  
Southwest Middle School  
Bayside High School

**Drawn By:**  
Planning & Project Management  
Blake Stinson  
August 28, 2023

Esri Community Maps Contributors, FDEP, Esri, HERE, Garmin, SafeGraph, GeoTechnologies, Inc, METI/NASA, USGS, EPA, NPS, US Census Bureau, USDA

