

CHAPARRAL P.U.D. PHASE FOUR A

LYING IN SECTIONS 4&9, TOWNSHIP 29 SOUTH, RANGE 36 EAST,
CITY OF PALM BAY, BREVARD COUNTY, FLORIDA

— PLAT PREPARED BY —
AAL LAND SURVEYING SERVICES, INC.

PROJECT #30476-4 A
DATE: 06-17-24
3970 MINTON ROAD
WEST MELBOURNE, FLORIDA 32904
(321) 768-8710

DESCRIPTION:

LANDS DESCRIBED IN OFFICIAL RECORDS BOOK 5827, PAGE 3621, OF THE PUBLIC RECORDS OF BREVARD COUNTY, FLORIDA, SAID LANDS LYING IN SECTIONS 4 AND 9, TOWNSHIP 29 SOUTH, RANGE 36 EAST, BREVARD COUNTY, FLORIDA, BEING MORE PARTICULARLY DESCRIBED AS FOLLOWS:

BEGIN AT THE SOUTHEAST CORNER OF SAID CHAPARRAL P.U.D. PHASE THREE B, ACCORDING TO THE PLAT THERE OF, AS RECORDED IN PLAT BOOK 72, PAGE 48, OF THE SAID PUBLIC RECORDS OF BREVARD COUNTY; THENCE RUN SOUTH 00°01'17" WEST, ALONG THE WEST RIGHT-OF-WAY LINE OF THE MELBOURNE-TILMAN DRAINAGE DISTRICT CANAL NO. 8, A DISTANCE OF 2197.11 FEET; THENCE NORTH 89°48'22" EAST, A DISTANCE OF 13.00 FEET; THENCE SOUTH 00°00'22" WEST, A DISTANCE OF 672.92 FEET; THENCE SOUTH 89°48'07" WEST, A DISTANCE OF 1268.02 FEET; THENCE NORTH 00°00'20" EAST, A DISTANCE OF 673.04 FEET TO THE SOUTH LINE OF SECTION 4, TOWNSHIP 29 SOUTH, RANGE 36 EAST; THENCE SOUTH 89°48'21" WEST, A DISTANCE OF 1255.03 FEET; THENCE NORTH 00°00'21" EAST ALONG THE EAST RIGHT-OF-WAY LINE OF MELBOURNE-TILMAN DRAINAGE DISTRICT CANAL NO. 8, A DISTANCE OF 2692.41 FEET; THENCE NORTH 89°47'06" EAST ALONG THE SOUTH LINE OF THE NORTHEAST 1/4 OF SAID SECTION 4, A DISTANCE OF 5.81 FEET; THENCE SOUTH 00°01'55" EAST ALONG THE WEST LINE OF MALABAR LAKES WEST SUBDIVISION PHASE 2, ACCORDING TO THE PLAT THEREOF, AS RECORDED IN PLAT BOOK 51, PAGE 37, OF THE PUBLIC RECORDS OF BREVARD COUNTY, FLORIDA, A DISTANCE OF 0.65 FEET; THENCE NORTH 89°45'53" EAST, ALONG THE SOUTH LINE OF SAID MALABAR LAKES WEST PHASE 2, A DISTANCE OF 1249.59 FEET; THENCE SOUTH 00°00'49" WEST, A DISTANCE OF 494.43 FEET; THENCE NORTH 89°47'06" EAST, A DISTANCE OF 855.63 FEET; THENCE SOUTH 89°58'43" EAST, A DISTANCE OF 399.69 FEET TO THE POINT OF BEGINNING.

CONTAINING 160.51 ACRES MORE OR LESS.

GENERAL NOTES:

- THE BEARINGS SHOWN HEREON ARE BASED ON AN ASSUMED BEARING OF SOUTH 89°58'43" EAST FOR THE SOUTH LINE OF CHAPARRAL P.U.D. PHASE THREE B, PLAT BOOK 72, PAGE 48, OF THE PUBLIC RECORDS OF BREVARD COUNTY, FLORIDA, A MONUMENTED AND WELL ESTABLISHED LINE.
- ALL PRIVATE UTILITY EASEMENTS AND PRIVATE DRAINAGE EASEMENTS CREATED BY THIS PLAT ARE FOR THE USE AND BENEFIT OF AND BY CHAPARRAL OF PALM BAY COMMUNITY DEVELOPMENT DISTRICT.
- AN EASEMENT 5 FEET IN WIDTH IS DEDICATED ADJACENT TO AND CONTIGUOUS WITH ALL SIDE LOT LINES FOR THE PURPOSE OF PROVIDING FOR INSTALLATION AND MAINTENANCE OF PUBLIC UTILITIES AND PRIVATE DRAINAGE, UNLESS OTHERWISE SHOWN.
- AN EASEMENT 12 FEET IN WIDTH IS DEDICATED ALONG ALL LOT AND TRACTS CREATED BY THIS PLAT ADJACENT TO ROAD TRACT RD-1 FOR THE PURPOSE OF PROVIDING PRIVATE DRAINAGE, INSTALLATION AND MAINTENANCE OF PRIVATE AND PUBLIC UTILITIES.
- SURVEY MONUMENTS WITHIN THE SUBDIVISION SHALL BE SET IN ACCORDANCE WITH FLORIDA STATUTES CHAPTER 177.091 (7-9). ALL LOT CORNERS WILL BE SET WITH A 1/2" IRON ROD AND CAP OR NAIL AND DISK STAMPED "TOWNSHIP PLS 5383" WHERE POSSIBLE BEFORE THE TRANSFER OF ANY LOTS.
- TRACT AC-3 SHALL BE FOR THE PURPOSE OF INGRESS/EGRESS EASEMENT, PUBLIC UTILITIES AND DRAINAGE AND SHALL BE OWNED BY THE CHAPARRAL OF PALM BAY COMMUNITY DEVELOPMENT DISTRICT, ITS SUCCESSORS AND/OR ASSIGNS, AND MAINTAINED BY THE USER OF THE EASEMENT.
- TRACT RD-1 SHALL BE FOR THE PURPOSE OF PRIVATE ROAD RIGHT-OF-WAY WITH AN EASEMENT FOR THE PURPOSE OF INSTALLATION AND MAINTENANCE OF PRIVATE DRAINAGE, PUBLIC AND PRIVATE UTILITIES AND SHALL BE MAINTAINED BY CHAPARRAL OF PALM BAY COMMUNITY DEVELOPMENT DISTRICT. A PERPETUAL NON-EXCLUSIVE PUBLIC INGRESS AND EGRESS EASEMENT IS HEREBY RESERVED OVER AND UPON TRACT RD-1, SHOWN HEREON FOR THE CITY OF PALM BAY, ALL GOVERNMENT AGENCIES, ALL PUBLIC AND PRIVATE UTILITY COMPANIES, AND EMERGENCY VEHICLES. THE CITY OF PALM BAY SHALL NOT BE RESPONSIBLE FOR ANY MAINTENANCE BY CHAPARRAL OF PALM BAY COMMUNITY DEVELOPMENT DISTRICT.
- TRACTS ST-1, ST-8, ST-10, ST-11, ST-12, ST-13, ST-14, ST-15, ST-16, ST-17, ST-18, ST-19, ST-20, ST-21, ST-22, ST-23, ST-24, ST-25, ST-26, ST-27, ST-28, ST-29, ST-30, ST-31, ST-32, ST-33, ST-34, ST-35, ST-36, ST-37, ST-38, ST-39, ST-40, ST-41, ST-42, ST-43, ST-44, ST-45, ST-46, ST-47, ST-48, ST-49, ST-50, ST-51, ST-52, ST-53, ST-54, ST-55, ST-56, ST-57, ST-58, ST-59, ST-60, ST-61, ST-62, ST-63, ST-64, ST-65, ST-66, ST-67, ST-68, ST-69, ST-70, ST-71, ST-72, ST-73, ST-74, ST-75, ST-76, ST-77, ST-78, ST-79, ST-80, ST-81, ST-82, ST-83, ST-84, ST-85, ST-86, ST-87, ST-88, ST-89, ST-90, ST-91, ST-92, ST-93, ST-94, ST-95, ST-96, ST-97, ST-98, ST-99, ST-100, ST-101, ST-102, ST-103, ST-104, ST-105, ST-106, ST-107, ST-108, ST-109, ST-110, ST-111, ST-112, ST-113, ST-114, ST-115, ST-116, ST-117, ST-118, ST-119, ST-120, ST-121, ST-122, ST-123, ST-124, ST-125, ST-126, ST-127, ST-128, ST-129, ST-130, ST-131, ST-132, ST-133, ST-134, ST-135, ST-136, ST-137, ST-138, ST-139, ST-140, ST-141, ST-142, ST-143, ST-144, ST-145, ST-146, ST-147, ST-148, ST-149, ST-150, ST-151, ST-152, ST-153, ST-154, ST-155, ST-156, ST-157, ST-158, ST-159, ST-160, ST-161, ST-162, ST-163, ST-164, ST-165, ST-166, ST-167, ST-168, ST-169, ST-170, ST-171, ST-172, ST-173, ST-174, ST-175, ST-176, ST-177, ST-178, ST-179, ST-180, ST-181, ST-182, ST-183, ST-184, ST-185, ST-186, ST-187, ST-188, ST-189, ST-190, ST-191, ST-192, ST-193, ST-194, ST-195, ST-196, ST-197, ST-198, ST-199, ST-200, ST-201, ST-202, ST-203, ST-204, ST-205, ST-206, ST-207, ST-208, ST-209, ST-210, ST-211, ST-212, ST-213, ST-214, ST-215, ST-216, ST-217, ST-218, ST-219, ST-220, ST-221, ST-222, ST-223, ST-224, ST-225, ST-226, ST-227, ST-228, ST-229, ST-230, ST-231, ST-232, ST-233, ST-234, ST-235, ST-236, ST-237, ST-238, ST-239, ST-240, ST-241, ST-242, ST-243, ST-244, ST-245, ST-246, ST-247, ST-248, ST-249, ST-250, ST-251, ST-252, ST-253, ST-254, ST-255, ST-256, ST-257, ST-258, ST-259, ST-260, ST-261, ST-262, ST-263, ST-264, ST-265, ST-266, ST-267, ST-268, ST-269, ST-270, ST-271, ST-272, ST-273, ST-274, ST-275, ST-276, ST-277, ST-278, ST-279, ST-280, ST-281, ST-282, ST-283, ST-284, ST-285, ST-286, ST-287, ST-288, ST-289, ST-290, ST-291, ST-292, ST-293, ST-294, ST-295, ST-296, ST-297, ST-298, ST-299, ST-300, ST-301, ST-302, ST-303, ST-304, ST-305, ST-306, ST-307, ST-308, ST-309, ST-310, ST-311, ST-312, ST-313, ST-314, ST-315, ST-316, ST-317, ST-318, ST-319, ST-320, ST-321, ST-322, ST-323, ST-324, ST-325, ST-326, ST-327, ST-328, ST-329, ST-330, ST-331, ST-332, ST-333, ST-334, ST-335, ST-336, ST-337, ST-338, ST-339, ST-340, ST-341, ST-342, ST-343, ST-344, ST-345, ST-346, ST-347, ST-348, ST-349, ST-350, ST-351, ST-352, ST-353, ST-354, ST-355, ST-356, ST-357, ST-358, ST-359, ST-360, ST-361, ST-362, ST-363, ST-364, ST-365, ST-366, ST-367, ST-368, ST-369, ST-370, ST-371, ST-372, ST-373, ST-374, ST-375, ST-376, ST-377, ST-378, ST-379, ST-380, ST-381, ST-382, ST-383, ST-384, ST-385, ST-386, ST-387, ST-388, ST-389, ST-390, ST-391, ST-392, ST-393, ST-394, ST-395, ST-396, ST-397, ST-398, ST-399, ST-400, ST-401, ST-402, ST-403, ST-404, ST-405, ST-406, ST-407, ST-408, ST-409, ST-410, ST-411, ST-412, ST-413, ST-414, ST-415, ST-416, ST-417, ST-418, ST-419, ST-420, ST-421, ST-422, ST-423, ST-424, ST-425, ST-426, ST-427, ST-428, ST-429, ST-430, ST-431, ST-432, ST-433, ST-434, ST-435, ST-436, ST-437, ST-438, ST-439, ST-440, ST-441, ST-442, ST-443, ST-444, ST-445, ST-446, ST-447, ST-448, ST-449, ST-450, ST-451, ST-452, ST-453, ST-454, ST-455, ST-456, ST-457, ST-458, ST-459, ST-460, ST-461, ST-462, ST-463, ST-464, ST-465, ST-466, ST-467, ST-468, ST-469, ST-470, ST-471, ST-472, ST-473, ST-474, ST-475, ST-476, ST-477, ST-478, ST-479, ST-480, ST-481, ST-482, ST-483, ST-484, ST-485, ST-486, ST-487, ST-488, ST-489, ST-490, ST-491, ST-492, ST-493, ST-494, ST-495, ST-496, ST-497, ST-498, ST-499, ST-500, ST-501, ST-502, ST-503, ST-504, ST-505, ST-506, ST-507, ST-508, ST-509, ST-510, ST-511, ST-512, ST-513, ST-514, ST-515, ST-516, ST-517, ST-518, ST-519, ST-520, ST-521, ST-522, ST-523, ST-524, ST-525, ST-526, ST-527, ST-528, ST-529, ST-530, ST-531, ST-532, ST-533, ST-534, ST-535, ST-536, ST-537, ST-538, ST-539, ST-540, ST-541, ST-542, ST-543, ST-544, ST-545, ST-546, ST-547, ST-548, ST-549, ST-550, ST-551, ST-552, ST-553, ST-554, ST-555, ST-556, ST-557, ST-558, ST-559, ST-560, ST-561, ST-562, ST-563, ST-564, ST-565, ST-566, ST-567, ST-568, ST-569, ST-570, ST-571, ST-572, ST-573, ST-574, ST-575, ST-576, ST-577, ST-578, ST-579, ST-580, ST-581, ST-582, ST-583, ST-584, ST-585, ST-586, ST-587, ST-588, ST-589, ST-590, ST-591, ST-592, ST-593, ST-594, ST-595, ST-596, ST-597, ST-598, ST-599, ST-600, ST-601, ST-602, ST-603, ST-604, ST-605, ST-606, ST-607, ST-608, ST-609, ST-610, ST-611, ST-612, ST-613, ST-614, ST-615, ST-616, ST-617, ST-618, ST-619, ST-620, ST-621, ST-622, ST-623, ST-624, ST-625, ST-626, ST-627, ST-628, ST-629, ST-630, ST-631, ST-632, ST-633, ST-634, ST-635, ST-636, ST-637, ST-638, ST-639, ST-640, ST-641, ST-642, ST-643, ST-644, ST-645, ST-646, ST-647, ST-648, ST-649, ST-650, ST-651, ST-652, ST-653, ST-654, ST-655, ST-656, ST-657, ST-658, ST-659, ST-660, ST-661, ST-662, ST-663, ST-664, ST-665, ST-666, ST-667, ST-668, ST-669, ST-670, ST-671, ST-672, ST-673, ST-674, ST-675, ST-676, ST-677, ST-678, ST-679, ST-680, ST-681, ST-682, ST-683, ST-684, ST-685, ST-686, ST-687, ST-688, ST-689, ST-690, ST-691, ST-692, ST-693, ST-694, ST-695, ST-696, ST-697, ST-698, ST-699, ST-700, ST-701, ST-702, ST-703, ST-704, ST-705, ST-706, ST-707, ST-708, ST-709, ST-710, ST-711, ST-712, ST-713, ST-714, ST-715, ST-716, ST-717, ST-718, ST-719, ST-720, ST-721, ST-722, ST-723, ST-724, ST-725, ST-726, ST-727, ST-728, ST-729, ST-730, ST-731, ST-732, ST-733, ST-734, ST-735, ST-736, ST-737, ST-738, ST-739, ST-740, ST-741, ST-742, ST-743, ST-744, ST-745, ST-746, ST-747, ST-748, ST-749, ST-750, ST-751, ST-752, ST-753, ST-754, ST-755, ST-756, ST-757, ST-758, ST-759, ST-760, ST-761, ST-762, ST-763, ST-764, ST-765, ST-766, ST-767, ST-768, ST-769, ST-770, ST-771, ST-772, ST-773, ST-774, ST-775, ST-776, ST-777, ST-778, ST-779, ST-780, ST-781, ST-782, ST-783, ST-784, ST-785, ST-786, ST-787, ST-788, ST-789, ST-790, ST-791, ST-792, ST-793, ST-794, ST-795, ST-796, ST-797, ST-798, ST-799, ST-800, ST-801, ST-802, ST-803, ST-804, ST-805, ST-806, ST-807, ST-808, ST-809, ST-810, ST-811, ST-812, ST-813, ST-814, ST-815, ST-816, ST-817, ST-818, ST-819, ST-820, ST-821, ST-822, ST-823, ST-824, ST-825, ST-826, ST-827, ST-828, ST-829, ST-830, ST-831, ST-832, ST-833, ST-834, ST-835, ST-836, ST-837, ST-838, ST-839, ST-840, ST-841, ST-842, ST-843, ST-844, ST-845, ST-846, ST-847, ST-848, ST-849, ST-850, ST-851, ST-852, ST-853, ST-854, ST-855, ST-856, ST-857, ST-858, ST-859, ST-860, ST-861, ST-862, ST-863, ST-864, ST-865, ST-866, ST-867, ST-868, ST-869, ST-870, ST-871, ST-872, ST-873, ST-874, ST-875, ST-876, ST-877, ST-878, ST-879, ST-880, ST-881, ST-882, ST-883, ST-884, ST-885, ST-886, ST-887, ST-888, ST-889, ST-890, ST-891, ST-892, ST-893, ST-894, ST-895, ST-896, ST-897, ST-898, ST-899, ST-900, ST-901, ST-902, ST-903, ST-904, ST-905, ST-906, ST-907, ST-908, ST-909, ST-910, ST-911, ST-912, ST-913, ST-914, ST-915, ST-916, ST-917, ST-918, ST-919, ST-920, ST-921, ST-922, ST-923, ST-924, ST-925, ST-926, ST-927, ST-928, ST-929, ST-930, ST-931, ST-932, ST-933, ST-934, ST-935, ST-936, ST-937, ST-938, ST-939, ST-940, ST-941, ST-942, ST-943, ST-944, ST-945, ST-946, ST-947, ST-948, ST-949, ST-950, ST-951, ST-952, ST-953, ST-954, ST-955, ST-956, ST-957, ST-958, ST-959, ST-960, ST-961, ST-962, ST-963, ST-964, ST-965, ST-966, ST-967, ST-968, ST-969, ST-970, ST-971, ST-972, ST-973, ST-974, ST-975, ST-976, ST-977, ST-978, ST-979, ST-980, ST-981, ST-982, ST-983, ST-984, ST-985, ST-986, ST-987, ST-988, ST-989, ST-990, ST-991, ST-992, ST-993, ST-994, ST-995, ST-996, ST-997, ST-998, ST-999, ST-1000, ST-1001, ST-1002, ST-1003, ST-1004, ST-1005, ST-1006, ST-1007, ST-1008, ST-1009, ST-1010, ST-1011, ST-1012, ST-1013, ST-1014, ST-1015, ST-1016, ST-1017, ST-1018, ST-1019, ST-1020, ST-1021, ST-1022, ST-1023, ST-1024, ST-1025, ST-1026, ST-1027, ST-1028, ST-1029, ST-1030, ST-1031, ST-1032, ST-1033, ST-1034, ST-1035, ST-1036, ST-1037, ST-1038, ST-1039, ST-1040, ST-1041, ST-1042, ST-1043, ST-1044, ST-1045, ST-1046, ST-1047, ST-1048, ST-1049, ST-1050, ST-1051, ST-1052, ST-1053, ST-1054, ST-1055, ST-1056, ST-1057, ST-1058, ST-1059, ST-1060, ST-1061, ST-1062, ST-1063, ST-1064, ST-1065, ST-1066, ST-1067, ST-1068, ST-1069, ST-1070, ST-1071, ST-1072, ST-1073, ST-1074, ST-1075, ST-1076, ST-1077, ST-1078, ST-1079, ST-1080, ST-1081, ST-1082, ST-1083, ST-1084, ST-1085, ST-1086, ST-1087, ST-1088, ST-1089, ST-1090, ST-1091, ST-1092, ST-1093, ST-1094, ST-1095, ST-1096, ST-1097, ST-1098, ST-1099, ST-1100, ST-1101, ST-1102, ST-1103, ST-1104, ST-1105, ST-1106, ST-1107, ST-1108, ST-1109, ST-1110, ST-1111, ST-1112, ST-1113, ST-1114, ST-1115, ST-1116, ST-1117, ST-1118, ST-1119, ST-1120, ST-1121, ST-1122, ST-1123, ST-1124, ST-1125, ST-1126, ST-1127, ST-1128, ST-1129, ST-1130, ST-1131, ST-1132, ST-1133, ST-1134, ST-1135, ST-1136, ST-1137, ST-1138, ST-1139, ST-1140, ST-1141, ST-1142, ST-1143, ST-1144, ST-1145, ST-1146, ST-1147, ST-1148, ST-1149, ST-1150, ST-1151, ST-1152, ST-1153, ST-1154, ST-1155, ST-1156, ST-1157, ST-1158, ST-1159, ST-1160, ST-1161, ST-1162, ST-1163, ST-1164, ST-1165, ST-1166, ST-1167, ST-1168, ST-1169, ST-1170, ST-1171, ST-1172, ST-1173, ST-1174, ST-1175, ST-1176, ST-1177, ST-1178, ST-1179, ST-1180, ST-1181, ST-1182, ST-1183, ST-1184, ST-1185, ST-1186, ST-1187, ST-1188, ST-1189, ST-1190, ST-1191, ST-1192, ST-1193, ST-1194, ST-1195, ST-1196, ST-1197, ST-1198, ST-1199, ST-1200, ST-1201, ST-1202, ST-1203, ST-1204, ST-1205, ST-1206, ST-1207, ST-1208, ST-1209, ST-1210, ST-1211, ST-1212, ST-1213, ST-1214, ST-1215, ST-1216, ST-1217, ST-1218, ST-1219, ST-1220, ST-1221, ST-1222, ST-1223, ST-1224, ST-1225, ST-1226, ST-1227, ST-1228, ST-1229, ST-1230, ST-1231, ST-1232, ST-1233, ST-1234, ST-1235, ST-1236, ST-1237, ST-1238, ST-1239, ST-1240, ST-1241, ST-1242, ST-1243, ST-1244, ST-1245, ST-1246, ST-1247, ST-1248, ST-1249, ST-1250, ST-1251, ST-1252, ST-1253, ST-1254, ST-1255, ST-1256, ST-1257, ST-1258, ST-1259, ST-1260, ST-1261, ST-1262, ST-1263, ST-1264, ST-1265, ST-1266, ST-1267, ST-1268, ST-1269, ST-1270, ST-1271, ST-1272, ST-1273, ST-1274, ST-1275, ST-1276, ST-1277, ST-1278, ST-1279, ST-1280, ST-1281, ST-1282, ST-1283, ST-1284, ST-1285, ST-1286, ST-1287, ST-1288, ST-1289, ST-1290, ST-1291, ST-1292, ST-1293, ST-1294, ST-1295, ST-1296, ST-1297, ST-1298, ST-1299, ST-1300, ST-1301, ST-1302, ST-1303, ST-1304, ST-1305, ST-1306, ST-1307, ST-1308, ST-1309, ST-1310, ST-1311, ST-1312, ST-1313, ST-1314, ST-1315, ST-1316, ST-1317, ST-1318, ST-1319, ST-1320, ST-1321, ST-1322, ST-1323, ST-1324, ST-1325, ST-1326, ST-1327, ST-1328, ST-1329, ST-1330, ST-1331, ST-1332, ST-1333, ST-1334, ST-1335, ST-1336, ST-1337, ST-1338, ST-1339, ST-1340, ST-1341, ST-1342, ST-1343, ST-1344, ST-1345, ST-1346, ST-1347, ST-1348, ST-1349, ST-1350, ST-1351, ST-1352, ST-1353, ST-1354, ST-1355, ST-1356, ST-1357, ST-1358, ST-1359, ST-1360, ST-1361, ST-1362, ST-1363, ST-1364, ST-1365, ST-1366, ST-1367, ST-1368, ST-1369, ST-1370, ST-1371, ST-1372, ST-1373, ST-1374, ST-1375, ST-1376, ST-1377, ST-1378, ST-1379, ST-1380, ST-1381, ST-1382, ST-1383, ST-1384, ST-1385, ST-1386, ST-1387, ST-1388, ST-1389, ST-1390, ST-1391, ST-1392, ST-1393, ST-1394, ST-1395, ST-1396, ST-1397, ST-1398, ST-1399, ST-1400, ST-1401, ST-1402, ST-1403, ST-1404, ST-1405, ST-1406, ST-1407, ST-1408, ST-1409, ST-1410, ST-1411, ST-1412, ST-1413, ST-1414, ST-1415, ST-1416, ST-1417, ST-1418, ST-1419, ST-1420, ST-1421, ST-1422, ST-1423, ST-1424, ST-1425, ST-1426, ST-1427, ST-1428, ST-1429, ST-1430, ST-1431, ST-1432, ST-1433, ST-1434, ST-1435, ST-1436, ST-1437, ST-1438, ST-1439, ST-1440, ST-1441, ST-1442, ST-1443, ST-1444, ST-1445, ST-1446, ST-1447, ST-1448, ST-1449, ST-1450, ST-1451, ST-1452, ST-1453, ST-1454, ST-1455, ST-1456, ST-1457, ST-1458, ST-1459, ST-1460, ST-1461, ST-1462, ST-1463, ST-1464, ST-1465, ST-1466, ST-1467, ST-1468, ST-1469, ST-1470, ST-1471, ST-1472, ST-1473, ST-1474, ST-1475, ST-1476, ST-1477, ST-1478, ST-1479, ST-1480, ST-1481, ST-1482, ST-1483, ST-1484, ST-1485, ST-1486, ST-1487, ST-1488, ST-1489, ST-1490, ST-1491, ST-1492, ST-1493, ST-1494, ST-1495, ST-1496, ST-1497, ST-1498, ST-1499, ST-1500, ST-1501, ST-1502, ST-1503, ST-1504, ST-1505, ST-1506, ST-1507, ST-1508, ST-1509, ST-1510, ST-1511, ST-1512, ST-1513, ST-1514, ST-1515, ST-1516, ST-1517, ST-1518, ST-1519, ST-1520, ST-1521, ST-1522, ST-1523, ST-1524, ST-1525, ST-1526, ST-1527, ST-1528, ST-1529, ST-1530, ST-1531, ST-1532, ST-1533, ST-1534, ST-1535, ST-1536, ST-1537, ST-1538, ST-1539, ST-1540, ST-1541, ST-1542, ST-1543, ST-1544, ST-1545, ST-1546, ST-1547, ST-1548, ST-1549, ST-1550, ST-1551, ST-1552, ST-1553, ST-1554, ST-1555, ST-1556, ST-1557, ST-1558, ST-1559, ST-1560, ST-1561, ST-1562, ST-1563, ST-1564, ST-1565, ST-1566, ST-1567, ST-1568, ST-1569, ST-1570, ST-1571, ST-1572, ST-1573, ST-1574, ST-1575, ST-1576, ST-1577, ST-1578, ST-1579, ST-1580, ST-1581, ST-1582, ST-1583, ST-1584, ST-1585, ST-1586, ST-1587, ST-1588, ST-1589, ST-1590, ST-1591, ST-1592, ST-1593, ST-1594, ST-1595, ST-1596, ST-1597, ST-1598, ST-1599, ST-1600, ST-1601, ST-1602, ST-1603, ST-1604, ST-1605, ST-1606, ST-1607, ST-1608, ST-1609, ST-1610, ST-1611, ST-1612, ST-1613, ST-1614, ST-1615, ST-1616, ST-1617, ST-1618, ST-1619, ST-1620, ST-1621, ST-1622, ST-1623, ST-1624, ST-1625, ST-1626, ST-1627, ST-1628, ST-1629, ST-1630, ST-1631, ST-1632, ST-1633, ST-1634, ST-1635, ST-1636, ST-1637, ST-1638, ST-1639, ST-1640, ST-1641, ST-1642, ST-1643, ST-1644, ST-1645, ST-1646, ST-1647, ST-1648, ST-1649, ST-1650, ST-1651, ST-1652, ST-1653, ST-1654, ST-1655, ST-1656, ST-1657, ST-1658, ST-1659, ST-1660, ST-1661, ST-1662, ST-1663, ST-1664, ST-1665, ST-1666, ST-1

LYING IN SECTIONS 4&9, TOWNSHIP 29 SOUTH, RANGE 36 EAST, CITY OF PALM BAY, BREVARD COUNTY, FLORIDA

- PLAT PREPARED BY -
AAL LAND SURVEYING SERVICES, INC.
PROJECT #30476-4 A
DATE: 06-17-24
3570 MINTON ROAD
WEST MELBOURNE, FLORIDA 32904
(321) 768-8110

PLAT BOOK _____ PAGE _____
SHEET 2 OF 7
SECTIONS 4 & 9 TWP. 29 S., RANGE 36 E.

LEGEND

NAD NORTH AMERICAN DATUM
(N.S.) CURVED RECORDS BOOK
= CURVED PASS
= CURVE DELTA
= CURVE TO POINT FOUND
= CURVE LENGTH
= CURVE RADIUS
= CURVE DISTANCE
(NR) NON-RADIAL

LOCATED BUSINESS

1 CONCRETE MONUMENT PRM
FOUND STAMPING AS NOTED

1 IRON MONUMENT PRM
1 STAMPED POWHOSK PRM PLS 5383"

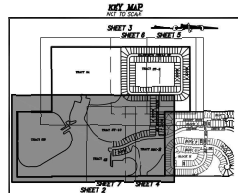
1 IRON MONUMENT PRM
1 STAMPED POWHOSK PRM PLS 5383"

1 IRON MONUMENT PRM
1 STAMPED POWHOSK PRM PLS 5383"

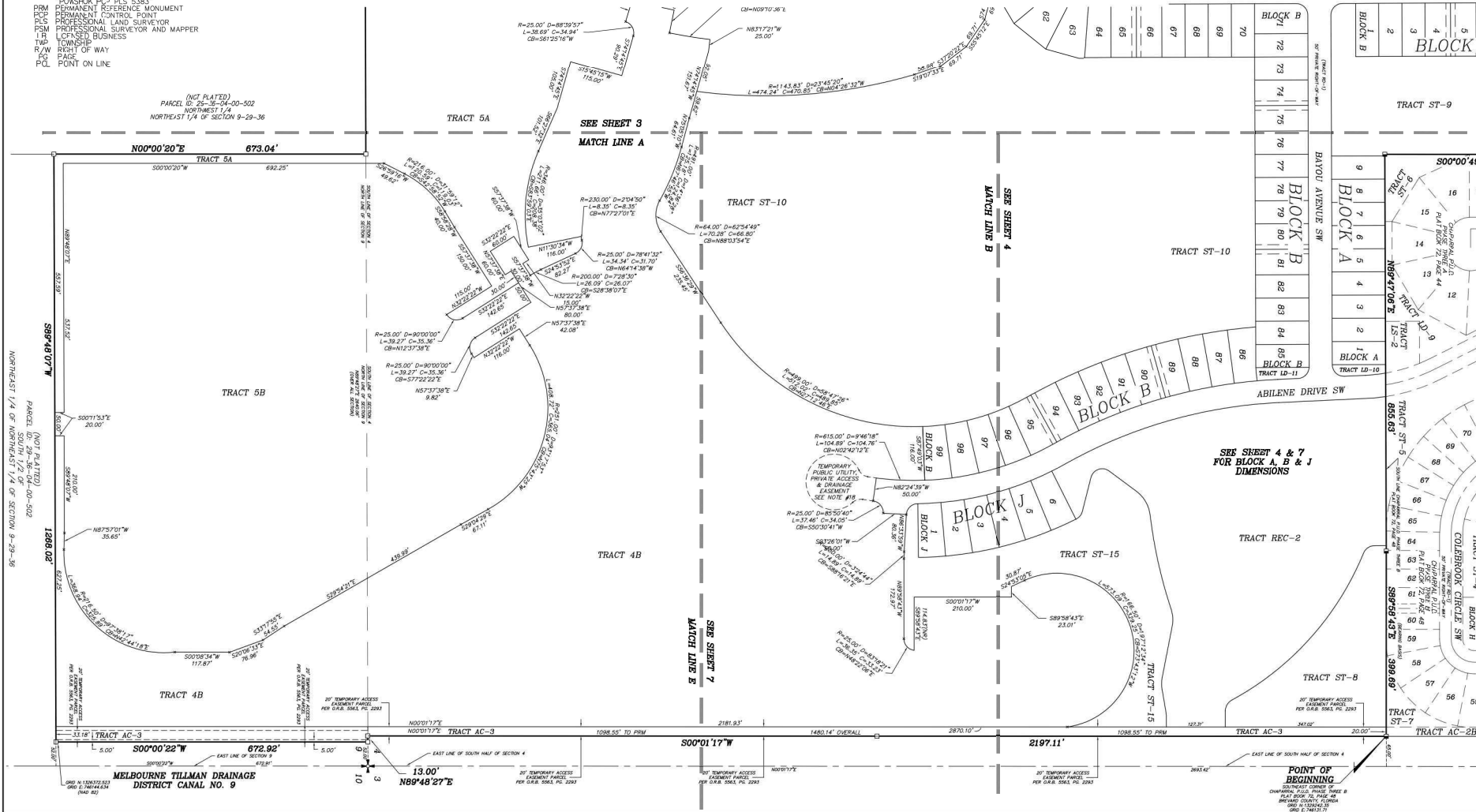
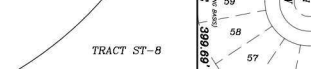
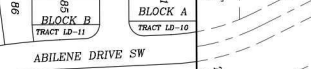
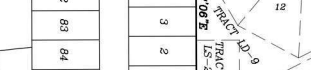
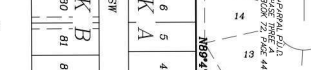
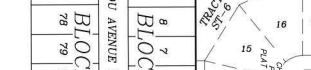
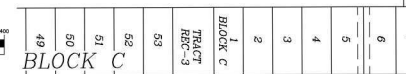
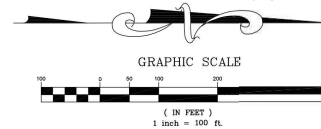
1 NAL AND DISK PRM FOUND
1 DISK PRM FOUND
POD NAL AND DISK STAMP STAMPED
POD NAL AND DISK STAMP STAMPED

PRM PERMANENT REFERENCE MONUMENT
PRM PERMANENT REFERENCE MONUMENT
PLS PROFESSIONAL LAND SURVEYOR
PLS PROFESSIONAL LAND SURVEYOR AND MAPPER
1 LOCATED BUSINESS

R/W RIGHT OF WAY
PAVE PAVED
DOT ON LINE



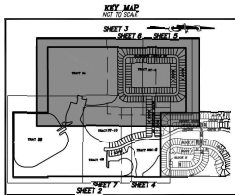
NOTICE: THIS PLAT, AS RECORDED IN ITS GRAPHIC FORM, IS THE OFFICIAL DEPICTION OF THE SUBDIVIDED LANDS DESCRIBED HEREIN AND WILL IN NO CIRCUMSTANCES BE SUPPLANTED IN AUTHORITY BY ANY OTHER GRAPHIC OR DIGITAL FORM OF THE PLAT. THERE MAY BE ADDITIONAL RESTRICTIONS THAT ARE NOT RECORDED ON THIS PLAT THAT MAY BE FOUND IN THE PUBLIC RECORDS OF THIS COUNTY.



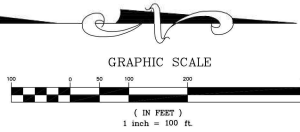
CHAPARRAL P.U.D. PHASE FOUR A

LYING IN SECTIONS 4&9, TOWNSHIP 29 SOUTH, RANGE 36 EAST, CITY OF PALM BAY, BREVARD COUNTY, FLORIDA

PLAT BOOK PAGE
SHEET 3 OF 7
SECTIONS 4 & 9 TWP. 29 S., RANGE 36 E.

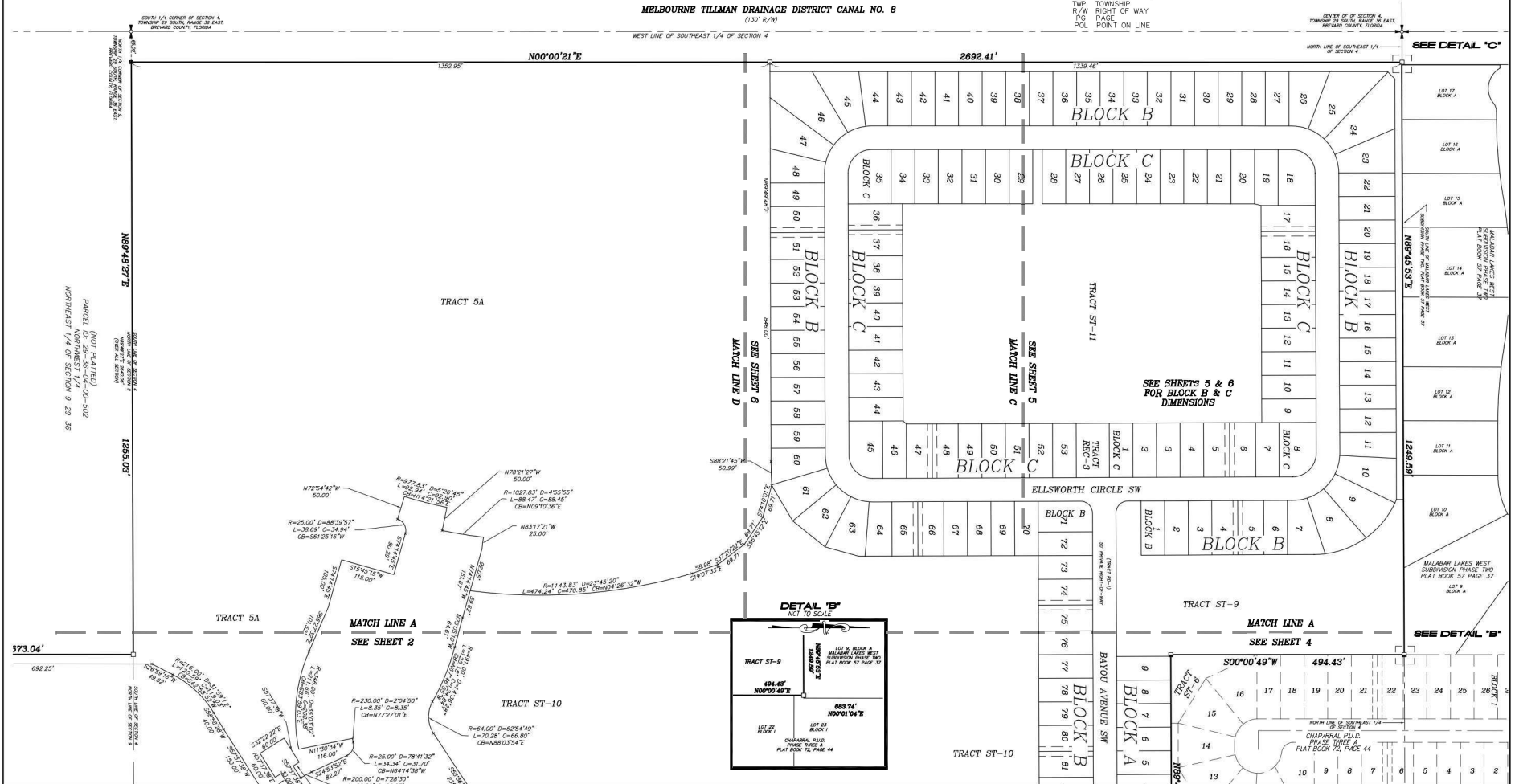
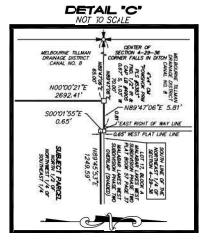


PLAT PREPARED BY -
AAL LAND SURVEYING SERVICES, INC.
PROJECT #30476-4 A
DATE: 06-17-24
1970 MINION ROAD
WEST MELEUCUE, FLORIDA 32904
(321) 768-8110



NOTICE: THIS PLAT, AS RECORDED IN ITS GRAPHIC FORM, IS THE OFFICIAL DEPICTION OF THE SUBDIVIDED LANDS DESCRIBED HEREIN AND WILL IN NO CIRCUMSTANCES BE SUPPLANTED IN AUTHORITY BY ANY OTHER GRAPHIC OR DIGITAL FORM OF THE PLAT. THERE MAY BE ADDITIONAL RESTRICTIONS THAT ARE NOT RECORDED ON THIS PLAT THAT MAY BE FOUND IN THE PUBLIC RECORDS OF THIS COUNTY.

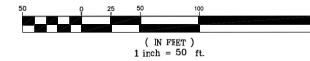
- LEGEND**
- NAD NORTH AMERICAN DATUM
 - O.B. OFFICIAL RECORDS BOOK
 - B.B. BEARING BASIS
 - LINE 1/4
 - CURVE RADIUS
 - CHORD BEARING
 - CHORD DISTANCE
 - NON-RADIAL
 - ADJ. BUSINESS
 - 4"x4" CONCRETE MONUMENT PRM
 - FOUND STAMPING AS N.B.D
 - 4"x4" CONCRETE MONUMENT PRM
 - STAMPED "POWSHOK PRM PLS 5383"
 - 5/8" IRON ROD PRM FOUND
 - STAMPED "POWSHOK PRM PLS 5383"
 - Δ NAIL AND DISK PRM SET
 - STAMPED "POWSHOK PRM PLS 5383"
 - Δ NAIL AND DISK PRM FOUND
 - STAMPED "POWSHOK PRM PLS 5383"
 - PCP NAIL AND DISK SET STAMPED
 - POWSHOK PCP PLS 5383
 - PCP NAIL AND DISK FOUND STAMPED
 - POWSHOK PCP PLS 5383
 - PERMANENT REFERENCE MONUMENT
 - PCP PERMANENT CONTROL POINT
 - P.S. PROFESSIONAL AND SURVEYOR
 - PSM PROFESSIONAL SURVEYOR AND MAPPER
 - LB LICENSED BUSINESS
 - TWP TOWNSHIP
 - R/W RIGHT OF WAY
 - PC PACE
 - POL POINT ON LINE



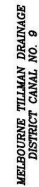
LYING IN SECTIONS 4&9, TOWNSHIP 29 SOUTH, RANGE 36 EAST, CITY OF PALM BAY, BREVARD COUNTY, FLORIDA

PROJECT #30476-4 A
DATE: 06-17-24
3970 MINTON ROAD
WEST MELBOURNE, FLORIDA 32904
(321) 768-8110

GRAPHIC SCALE



SHEET 4 OF 7
SECTIONS 4 & 9 TWP. 29 S., RANGE 36 E.

[illegible]

MATCH LINE B
SKE SHEET 7

MATCH LINE B
SEE SHEET 7

CHAPARRAL P.U.D. PHASE FOUR A

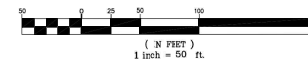
LYING IN SECTIONS 4 & 9, TOWNSHIP 29 SOUTH, RANGE 36 EAST, CITY OF PALM BAY, BREVARD COUNTY, FLORIDA

PLAT PREPARED BY -
AAL LAND SURVEYING SERVICES, INC.

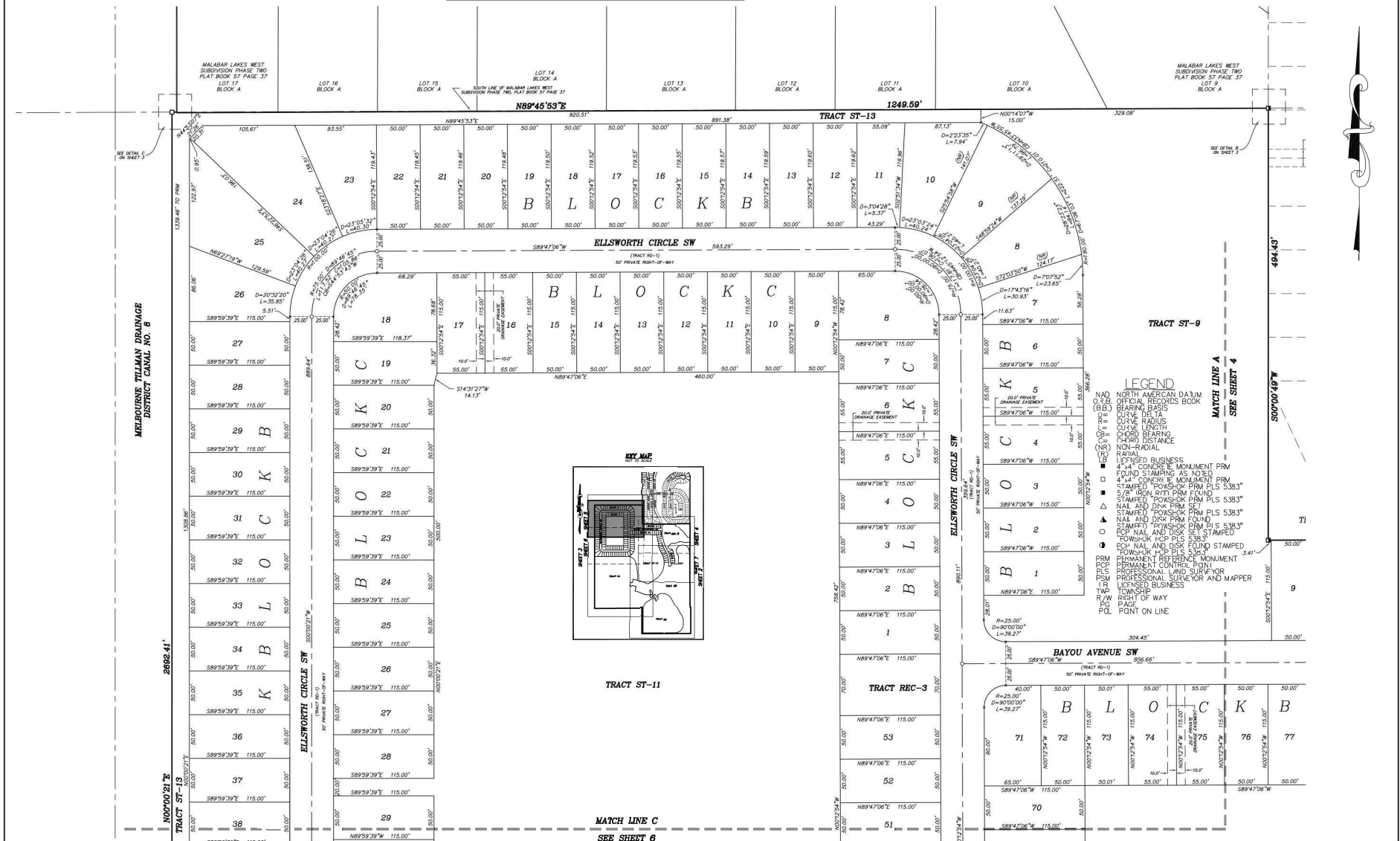
PROJECT #30476-4-A
DATE: 06-17-24
1570 MINTON ROAD
WEST MELBOURNE, FLORIDA 32904
(321) 768-8110

NOTICE: THIS PLAT, #5 RECORDED IN ITS GRAPHIC FORM, IS THE OFFICIAL DEPICTION OF THE SUBDIVIDED LANDS DESCRIBED HEREIN AND WILL IN NO CIRCUMSTANCES BE SUPERSEDED IN AUTHORITY BY ANY OTHER GRAPHIC OR DIGITAL FORM OF THE PLAT. THERE MAY BE ADDITIONAL RESTRICTIONS THAT ARE NOT RECORDED ON THIS PLAT THAT MAY BE FOUND IN THE PUBLIC RECORDS OF THIS COUNTY.

GRAPHIC SCALE



PLAT BOOK _____ PAGE _____
SHEET 5 OF 7
SECTIONS 4 & 9 TWP. 29 S., RANGE 36 E.

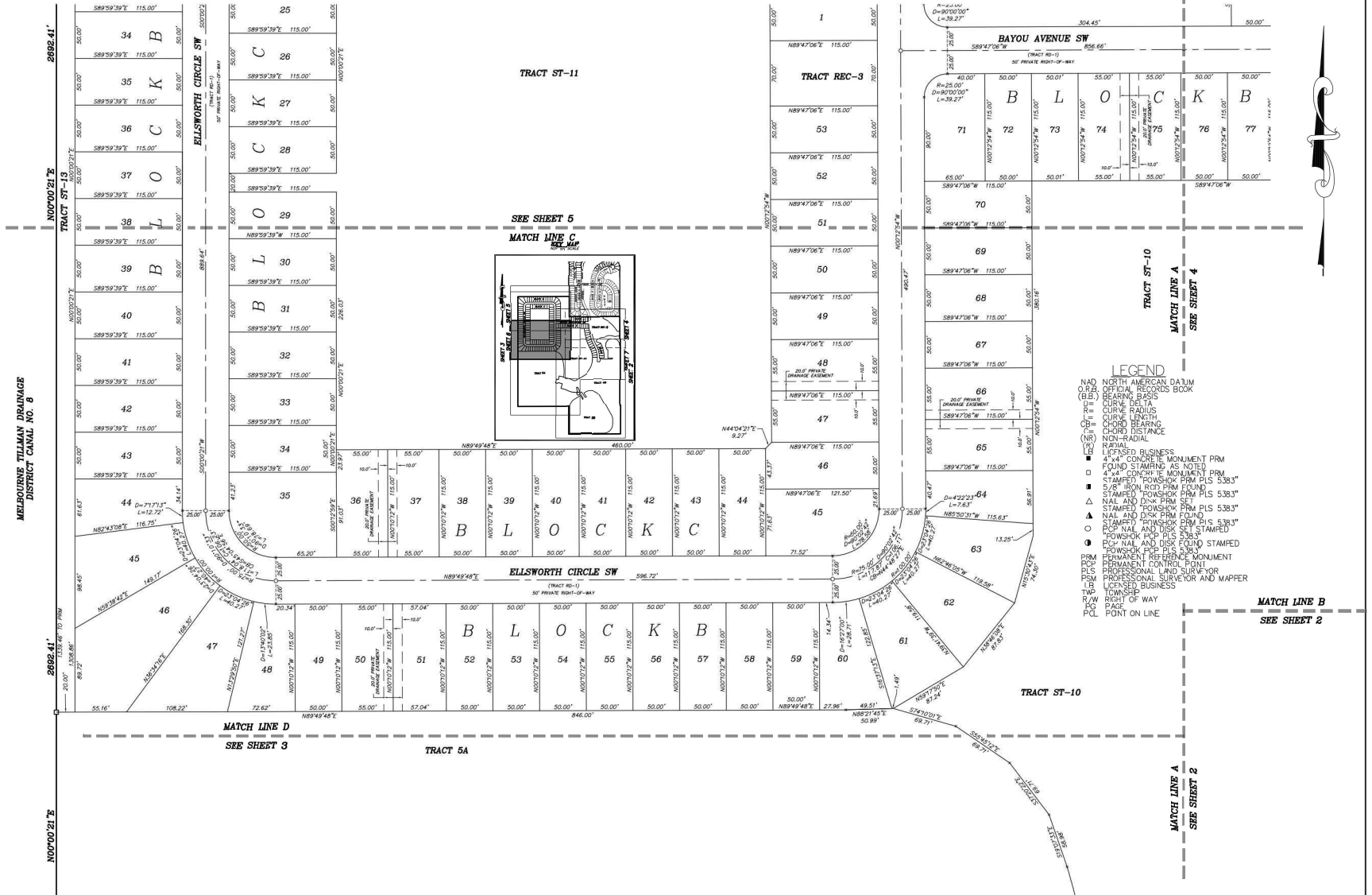
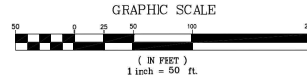


LYING IN SECTIONS 4&9, TOWNSHIP 29 SOUTH, RANGE 36 EAST, CITY OF PALM BAY, BREVARD COUNTY, FLORIDA

PROJECT #30476-4 A
DATE: 06-17-24
3970 MINTON ROAD
WEST MELBOURNE, FLORIDA 32904
(321) 768-8110

NOTICE: THIS PLAT, AS RECORDED IN ITS GRAPHIC FORM, IS THE OFFICIAL DEPICTION OF THE SUBLIVLDED LANDS DESCRIBED HEREIN AND WILL IN NO CIRCUMSTANCES BE SUPPLANTED IN AUTHORITY BY ANY OTHER GRAPHIC OR DIGITAL FORM OF THE PLAT. THERE MAY BE ADDITIONAL RESTRICTIONS THAT ARE NOT RECORDED ON THIS PLAT THAT MAY BE FOUND IN THE PUBLIC RECORDS OF THIS COUNTY.

PLAT BOOK _____ PAGE _____
SHEET 6 OF 7
SECTIONS 4 & 9 TWP. 29 S., RANGE 36 E.



CHAPARRAL P.U.D. PHASE FOUR A

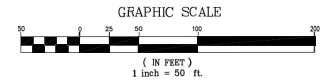
LYING IN SECTIONS 4&9, TOWNSHIP 29 SOUTH, RANGE 36 EAST, CITY OF PALM BAY, BREVARD COUNTY, FLORIDA

PLAT PREPARED BY -
AAL LAND SURVEYING SERVICES, INC.

PROJECT #30476-4 A
DATE: 06-17-24
3570 MINTON ROAD
WEST MELBOURNE, FLORIDA 32904
(321) 768-8110

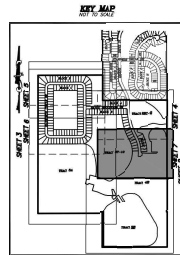
NOTICE: THIS PLAT, AS RECORDED IN ITS GRAPHIC FORM, IS THE OFFICIAL DEPICTION OF THE SUBDIVIDED LOTS DESCRIBED HEREIN AND WILL IN NO CIRCUMSTANCES BE SUPPLANTED IN AUTHORITY BY ANY OTHER GRAPHIC OR DIGITAL FORM OF THE PLAT. THERE MAY BE ADDITIONAL RESTRICTIONS THAT ARE NOT RECORDED ON THIS PLAT THAT MAY BE FOUND IN THE PUBLIC RECORDS OF THIS COUNTY.

PLAT BOOK _____ PAGE _____
SHEET 7 OF 7
SECTIONS 4 & 9 TWP. 29 S., RANGE 36 E.



LEGEND

NAD NORTH AMERICAN DATUM
C.B.R. OFFICIAL RECORDS BOOK
(B.B.) BEARING BASIS
R= CURVE RADIUS
L= CURVE LENGTH
CH= CHORD BEARING
CD= CHORD DISTANCE
(R) RADIAL
(S) SANGRE BUSINESS
I CENSED BUSINESS
4+4 CONCRETE MONUMENT PRM
4+4 CONCRETE MONUMENT PRM
FOUND STAMPING AS NOTED
9/8" IRON RDT PRM FOUND
STAMPED "POWSHOK PRM PLS 5.383"
NAIL AND DISK PRM SET
STAMPED "POWSHOK PRM PLS 5.383"
NAIL AND DISK PRM FOUND
STAMPED "POWSHOK PRM PLS 5.383"
ROP NAIL AND DISK SET STAMPED
"POWSHOK ROP PLS 5.383"
ROP NAIL AND DISK FOUND STAMPED
"POWSHOK ROP PLS 5.383"
PRM PERMANENT REFERENCE MONUMENT
PCP PERMANENT CONTROL POINT
PLS PROFESSIONAL LAND SURVEYOR
PSM PROFESSIONAL SURVEYOR AND MAPPER
L.C.S.D. LICENSED BUSINESS
TWP TOWNSHIP
R.W. RIGHT OF WAY
PG PARK
POL POINT ON LINE



SEE SHEET 4
MATCH LINE B

TRACT ST-15

SEE SHEET 4
MATCH LINE B

TRACT ST-10

TRACT ST-10

TRACT 4B

TRACT 4B

TRACT AC-3
2197.1'
300'0.17"W

MELBOURNE TILMAN DRAINAGE
DISTRICT CANAL NO. 9

TRACT AC-3
2197.11'
300'0.17"W

