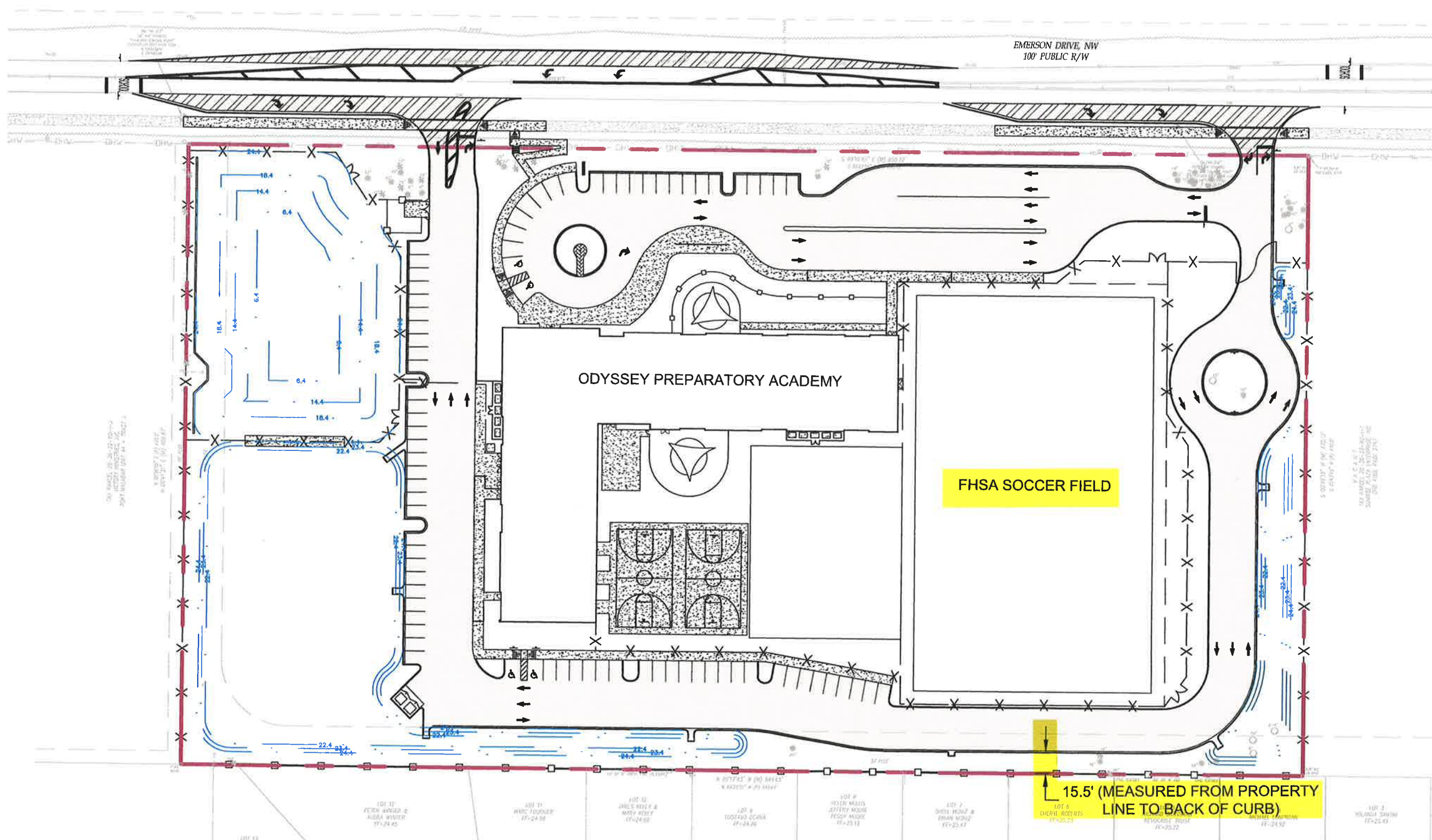


NOTE:
NC ZONING REQUEST MINIMUM
PAVEMENT SETBACK REDUCED
FROM 25' TO 15.5'




ODYSSEY PREPARATORY ACADEMY
PAVEMENT SETBACK VARIANCE EXHIBIT

1"=80'



04-01-24 OPAV-01



**CONSTRUCTION
ENGINEERING
GROUP**
Consulting Engineers

2651 Eau Gallie Blvd., Suite A
Melbourne, FL 32935

Tel. 321.253.1221
www.ceengineering.com
COA #0008097

