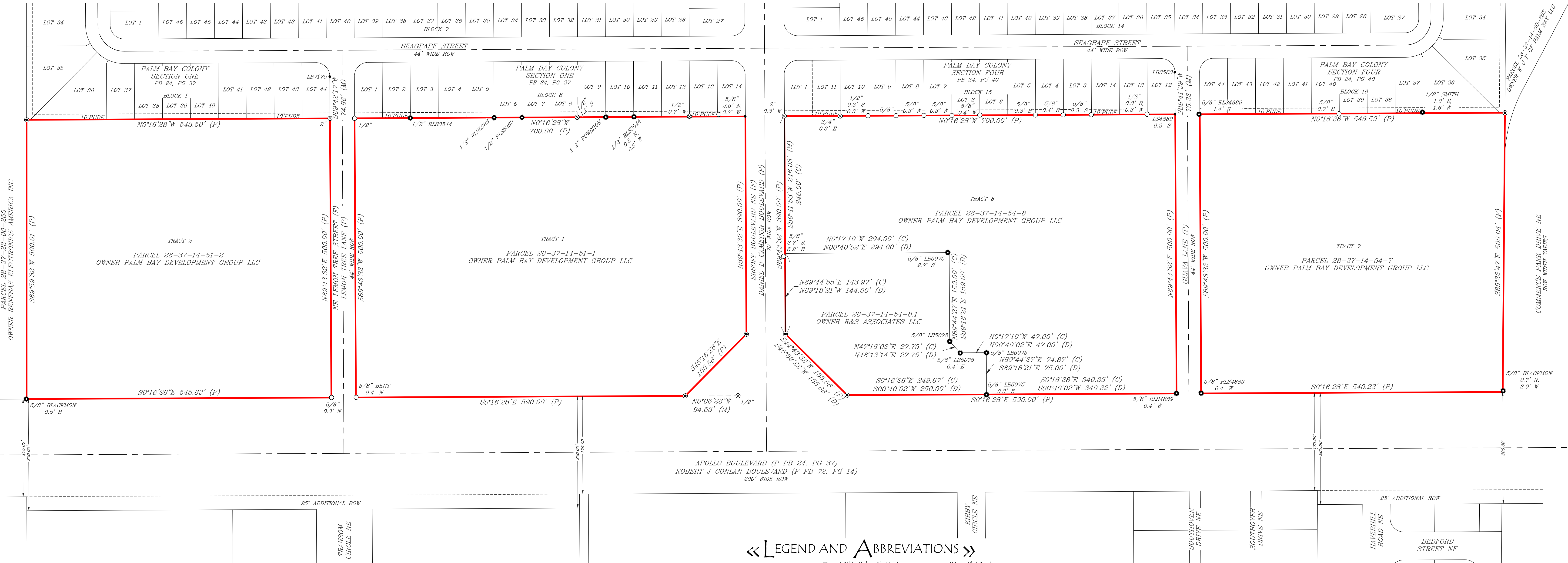


CAMPBELL SURVEYING NORTH 1

OWNER RENESAS ELECTRONICS AMERICA INC
PARCEL 28-37-23-00-250

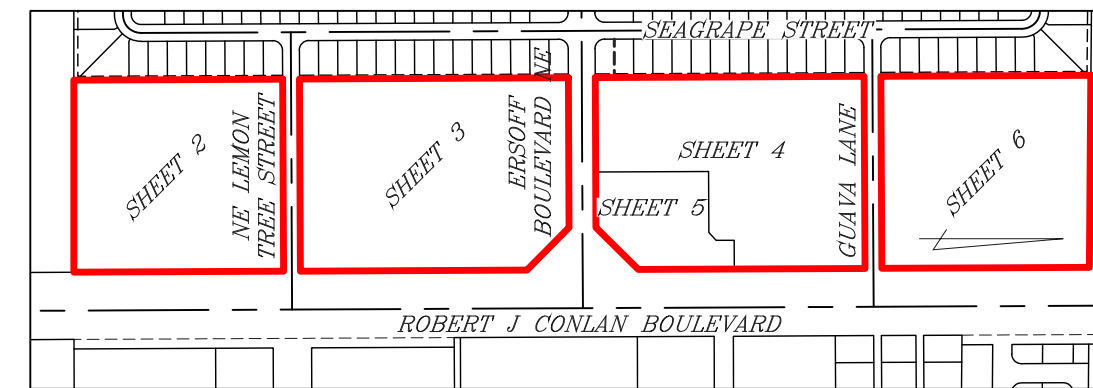


(ORB 9582, PG 378)

«SURVEYOR'S NOTES»

- «LEGEND AND ABBREVIATIONS»

- | | | | | | |
|--|--|--|--|------|---|
| | Found Iron Pipe with
Size, No ID | | Utility Vault | PB | Plat Book |
| | Found Iron Rod with
Size, No ID | | Water Marker | (P) | Plat Information |
| | Found Nail and Disk with
ID (if applicable) | | Water Meter | PLS | Professional Land Surveyor |
| | Set 5/8" Iron Rod and
Cap. LS978 | | Water Valve | PUDE | Public Utility and
Drainage Easement |
| | | | Wire Pull Box | RLS | Registered Land Surveyor |
| | | | AT&T American
Telephone and Telegraph | PS | Regular Parking Spaces |
| | Back Flow Preventer | | BFP Back Flow Preventer | RCP | Reinforced Concrete Pipe |
| | Bike Lane Symbol | | (C) Calculated Information | ROW | Right of Way |
| | Blowoff Valve | | CLF Chain Link Fence | SMH | Sanitary Manhole |
| | Bollard | | CBW Concrete Block Wall | ST | Sidewalk Tie |
| | Cable Riser | | CC Concrete Curb | SYL | Soild Yellow Line |
| | Cleanout | | CF Concrete Flume | SWL | Solid White Line |
| | Detectable Warning Pad | | CP Concrete Pad | SF | Steel Fence |
| | Drainage Manhole | | CW Concrete Walk | | between Columns |
| | Electric Manhole | | CMP Corrugated Metal Pipe | TB | Top of Bank |
| | Electric Panel | | CG Curb and Gutter | UGE | Underground Electric Line |
| | Fiber Optic Cable Marker | | DWL Dashed White Line | T | Underground
Telephone Line |
| | Fiber Optic Cable Riser | | DYL Dashed Yellow Line | W | Underground Water Line |
| | Fiber Optic Cable Vault | | DMH Drainage Manhole | VF | Vinyl Fence |
| | Fire Hydrant | | EP Edge of Pavement | WT | Wall Tie |
| | Handicap Parking Space | | EL Elevation | WF | Wood Fence |
| | Irrigation Control Valve | | FT Fence Tie | | |
| | Reflector | | FOC Fiber Optic Cable Line | | |
| | Sanitary Manhole | | (F) Field Information | | |
| | Sanitary Marker | | FFE Finished Floor Elevation | | |
| | Sanitary Valve | | HIC Handicap Parking Space | | |
| | Stop Bar | | HWF Hog Wire Fence | | |
| | Street Sign with ID | | INV Invert | | |
| | Telephone Line Marker | | LB Licensed Business | | |
| | Telephone Riser | | MPH Miles per Hour | | |
| | Traffic Arrows | | MES Mitered End Section | | |
| | Traffic Striping | | ORB Official Records Book | | |
| | Utility Pole with Guy Wire | | OHV Overhead Utility Line | | |
| | | | PG Page or Pages | | |
| | | | PF Plastic Fence | | |




«SHEET INDEX»
SCALE: 1" = 500'

This is to certify that this map or plat and the survey on which it is based were made in accordance with the 2021 Minimum Standard Detail Requirements for ALTA/NSPS Land Title Surveys, jointly established and adopted by ALTA and NSPS, and includes Items 1, 2, 3, 4, 6(a), 6(b), 7(a), 7(b)(1), 8, 10, 11(b), 13, 16, 17, 18 and 19 of Table A thereof. The fieldwork was completed on 12/14/2022.
Date of Plot or Map: 2-17-2022

Unless it bears the Signature and Original Raised Seal of a Florida Licensed Surveyor and Mapper this Drawing, Sketch, Plat or Map is for informational purposes only and is not valid.

John R Campbell
 JOHN R CAMPBELL
 PROFESSIONAL SURVEYOR & MAPPER #2351

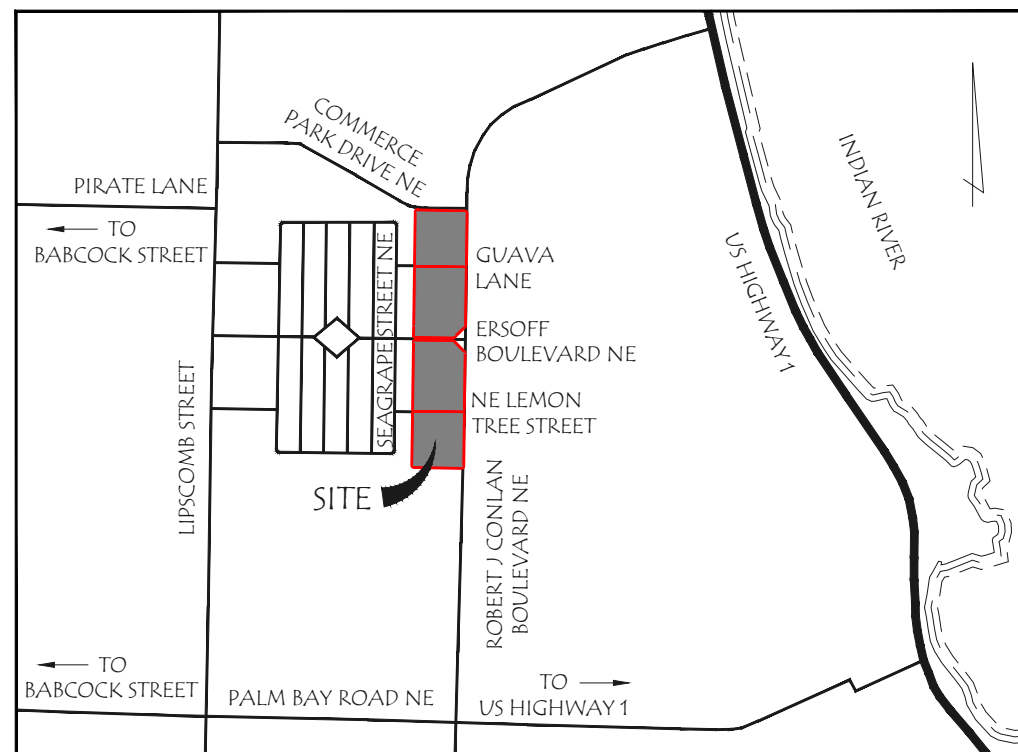


LICENSED Business #7978
115 Alma Blvd., Suite 102 / Mailing Address: P.O. Box 541866
Merritt Island, FL 32954 Phone: (321) 507.4811

«LOCATION MAP»
SCALE: 1" = 2000'±

«SHEET 1 OF 6»

DESCRIPTION, NOTES AND
BOUNDARY INFORMATION
SEE SHEETS 2 THROUGH 6 OF 4 FOR
TOPOGRAPHIC INFORMATION

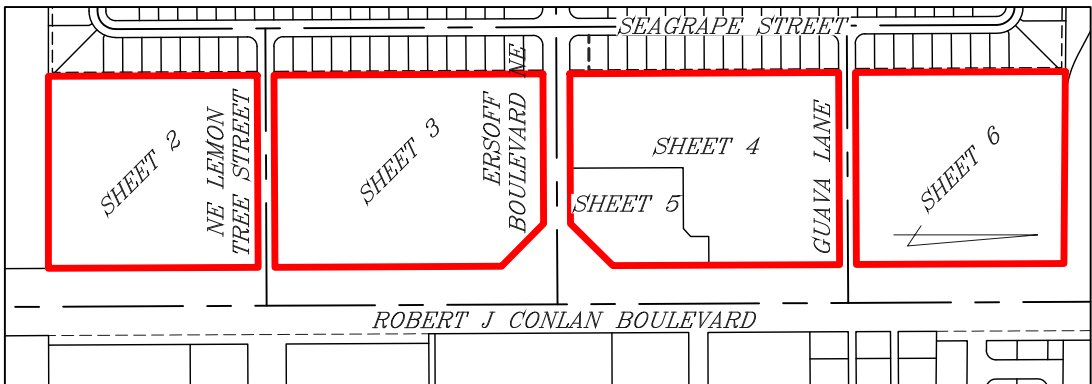


BOUNDARY & TOPOGRAPHIC SURVEY

IN A PORTION OF SECTION 14,
TOWNSHIP 28 SOUTH, RANGE 37 EAST, BREVARD COUNTY, FLORIDA

PARCEL 28-37-23-00-250
OWNER RENESSAS ELECTRONICS AMERICA INC

SEE SHEET 3 OF 6 FOR CONTINUATION



«SHEET INDEX»
SCALE: 1" = 500'

«SHEET 2 OF 6»
TOPOGRAPHIC INFORMATION
SEE SHEET 1 OF 6 FOR DESCRIPTION, NOTES
AND BOUNDARY INFORMATION



LICENSED Business #7978
115 Alma Blvd, Suite 102 / Mailing Address: P.O. Box 541866
Merritt Island, FL 32954 Phone: (321) 507.4811

BOUNDARY & TOPOGRAPHIC SURVEY

PREPARED FOR AND CERTIFIED TO:
Palm Bay Development Group LLC
Romulo Fonseca

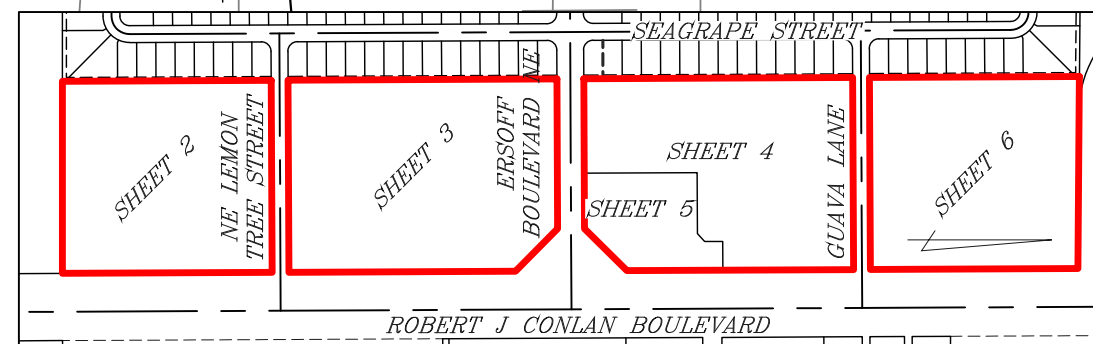
SITE LOCATION: Robert J Conlan Boulevard NE, Palm Bay, FL 32905			SECTION 14	
PROJECT NO. 2022-314			DRAWN BY: DASH	
DATE: 12/14/2022			TOWNSHIP 28 SOUTH	
REVISIONS			RANGE 37 EAST	
DATE	DESCRIPTION			

BOUNDARY & TOPOGRAPHIC SURVEY

IN A PORTION OF SECTION 14,
TOWNSHIP 28 SOUTH, RANGE 37 EAST, BREVARD COUNTY, FLORIDA

SEE SHEET 4 OF 6 FOR CONTINUATION

SEE SHEET 5 OF 6 FOR CONTINUATION



«SHEET INDEX»
SCALE: 1" = 500'

«SHEET 3 OF 6»
TOPOGRAPHIC INFORMATION
SEE SHEET 1 OF 6 FOR DESCRIPTION, NOTES
AND BOUNDARY INFORMATION



LICENSED Business #7978
115 Alma Blvd., Suite 102 / Mailing Address: P.O. Box 541866
Merriett Island, FL. 32954 Phone: (321) 507.4811

BOUNDARY & TOPOGRAPHIC SURVEY

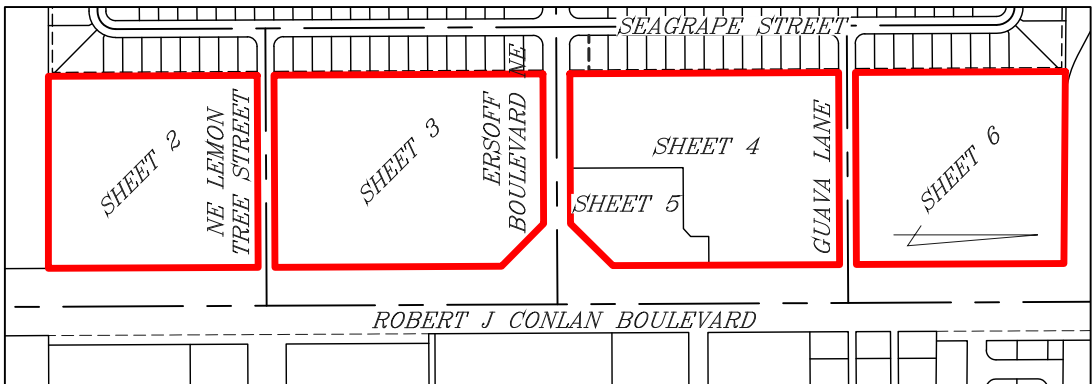
PREPARED FOR AND CERTIFIED TO:
Palm Bay Development Group LLC
Romulo Foncueva

SITE LOCATION: Robert J Conlan Boulevard NE Palm Bay, FL 32905			SECTION 14		
PROJECT NO.: 2022-314			DRAWN BY: DASH		
DATE: 12/14/2022			TOWNSHIP 28 SOUTH		
RANGE 37 EAST					
REVISIONS	DATE	DESCRIPTION			

BOUNDARY & TOPOGRAPHIC SURVEY

IN A PORTION OF SECTION 14,
TOWNSHIP 28 SOUTH, RANGE 37 EAST, BREVARD COUNTY, FLORIDA

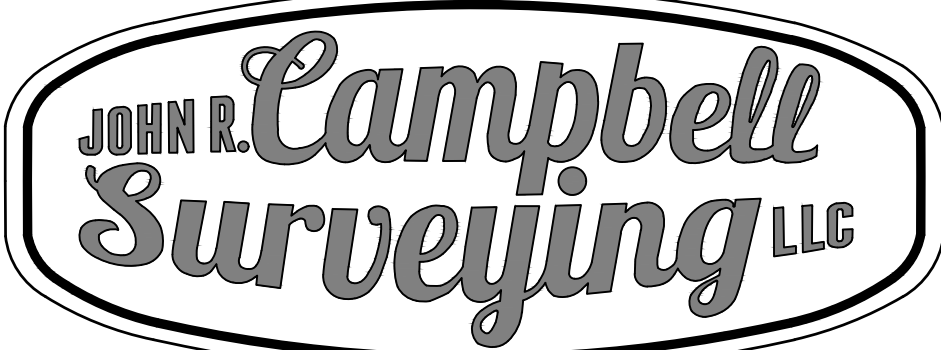
SEE SHEET 6 OF 6 FOR CONTINUATION



«SHEET INDEX»
SCALE: 1" = 500'

«SHEET 4 OF 6»

TOPOGRAPHIC INFORMATION
SEE SHEET 1 OF 6 FOR DESCRIPTION, NOTES
AND BOUNDARY INFORMATION



LICENSED Business #7978
115 Alma Blvd., Suite 102 / Mailing Address: P.O. Box 541866
Merriett Island, FL 32954 Phone: (321) 507.4811

BOUNDARY & TOPOGRAPHIC SURVEY

PREPARED FOR AND CERTIFIED TO:
Palm Bay Development Group LLC
Romulo Fonseca

SITE LOCATION: Robert J Conlan Boulevard NE, Palm Bay, FL 32905			SECTION 14	
PROJECT NO. 2022-314			DRAWN BY: DASH	
DATE: 12/14/2022			TOWNSHIP 28 SOUTH	
REVISIONS			RANGE 37 EAST	
DATE	DESCRIPTION			

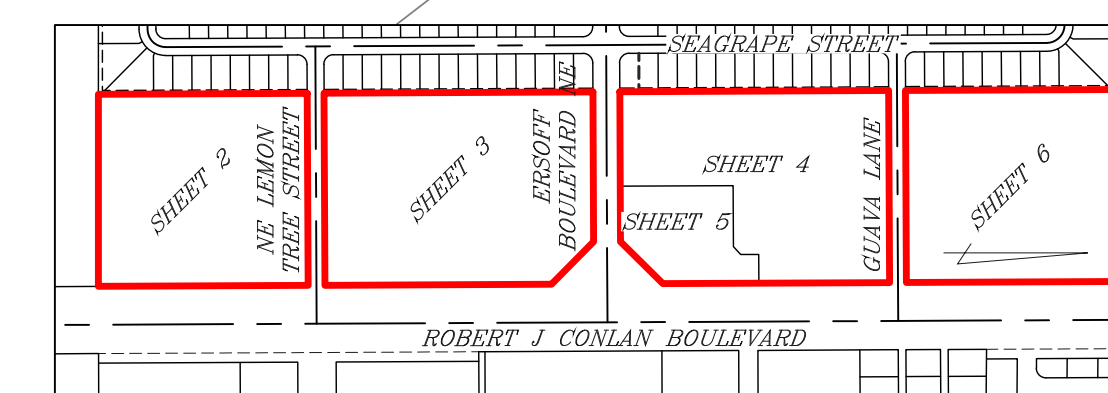
SEE SHEET 3 OF 6 FOR CONTINUATION

SEE SHEET 5 OF 6 FOR CONTINUATION

IN A PORTION OF SECTION 14,
TOWNSHIP 28 SOUTH, RANGE 37 EAST, BREVARD COUNTY, FLORIDA

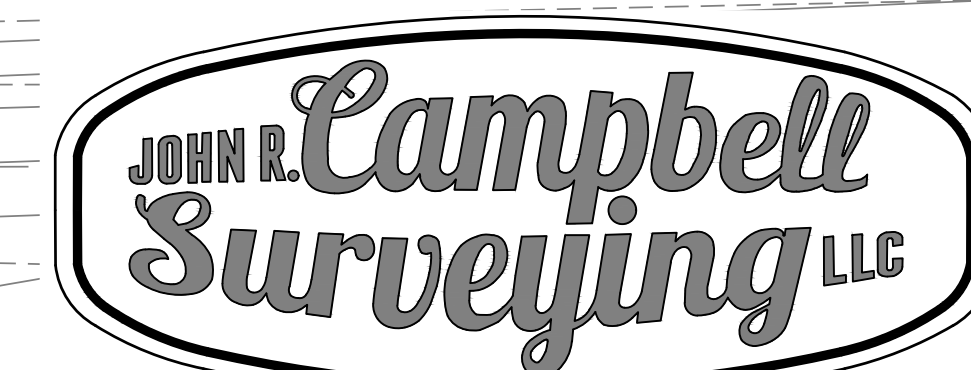
SEE SHEET 3 OF 6 FOR CONTINUATION

SEE SHEET 4 OF 6 FOR CONTINUATION



«SHEET INDEX»
SCALE: 1" = 500'

«SHEET 5 OF 6»
TOPOGRAPHIC INFORMATION
SEE SHEET 1 OF 6 FOR DESCRIPTION, NOTES
AND BOUNDARY INFORMATION

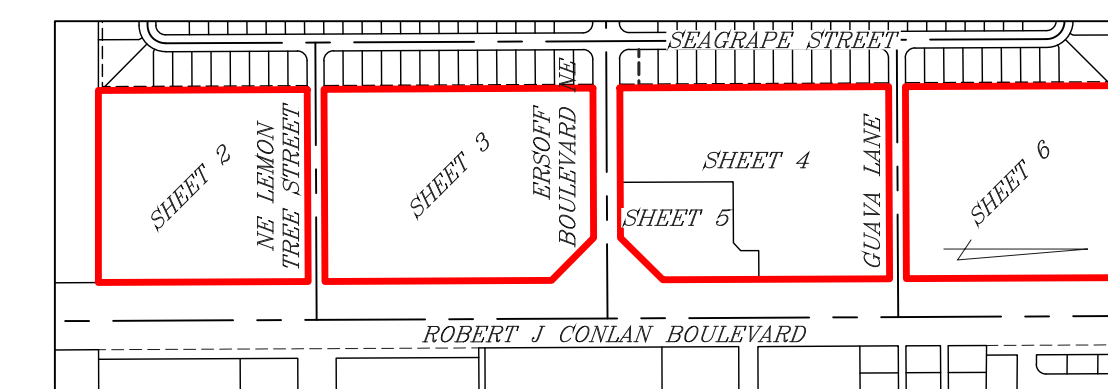
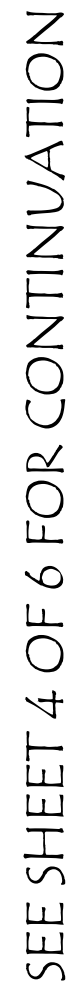


115 Alma Blvd., Suite 102 / Mailing Address: P.O.Box 541866
Merritt Island, FL. 32954 Phone: (321) 507.4811

PREPARED FOR AND CERTIFIED TO :
Palm Bay Development Group LLC
Romulo Foncueva

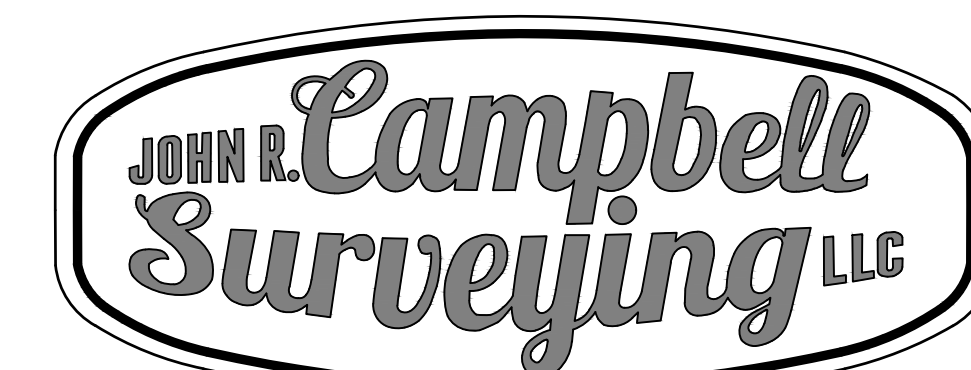
[illegible]

IN A PORTION OF SECTION 14,
TOWNSHIP 28 SOUTH, RANGE 37 EAST, BREVARD COUNTY, FLORIDA



«SHEET INDEX»
SCALE: 1" = 500'

«SHEET 6 OF 6»
TOPOGRAPHIC INFORMATION
SEE SHEET 1 OF 6 FOR DESCRIPTION, NOTE
AND BOUNDARY INFORMATION



LICENSED Business #7978

115 Alma Blvd., Suite 102 / Mailing Address: P.O.Box 541866
Merritt Island, FL. 32954 Phone: (321) 507.4811

BOUNDARY &
TOPOGRAPHIC SURVEY

PREPARED FOR AND CERTIFIED TO :
Palm Bay Development Group LLC
Romulo Foncueva

[illegible]