

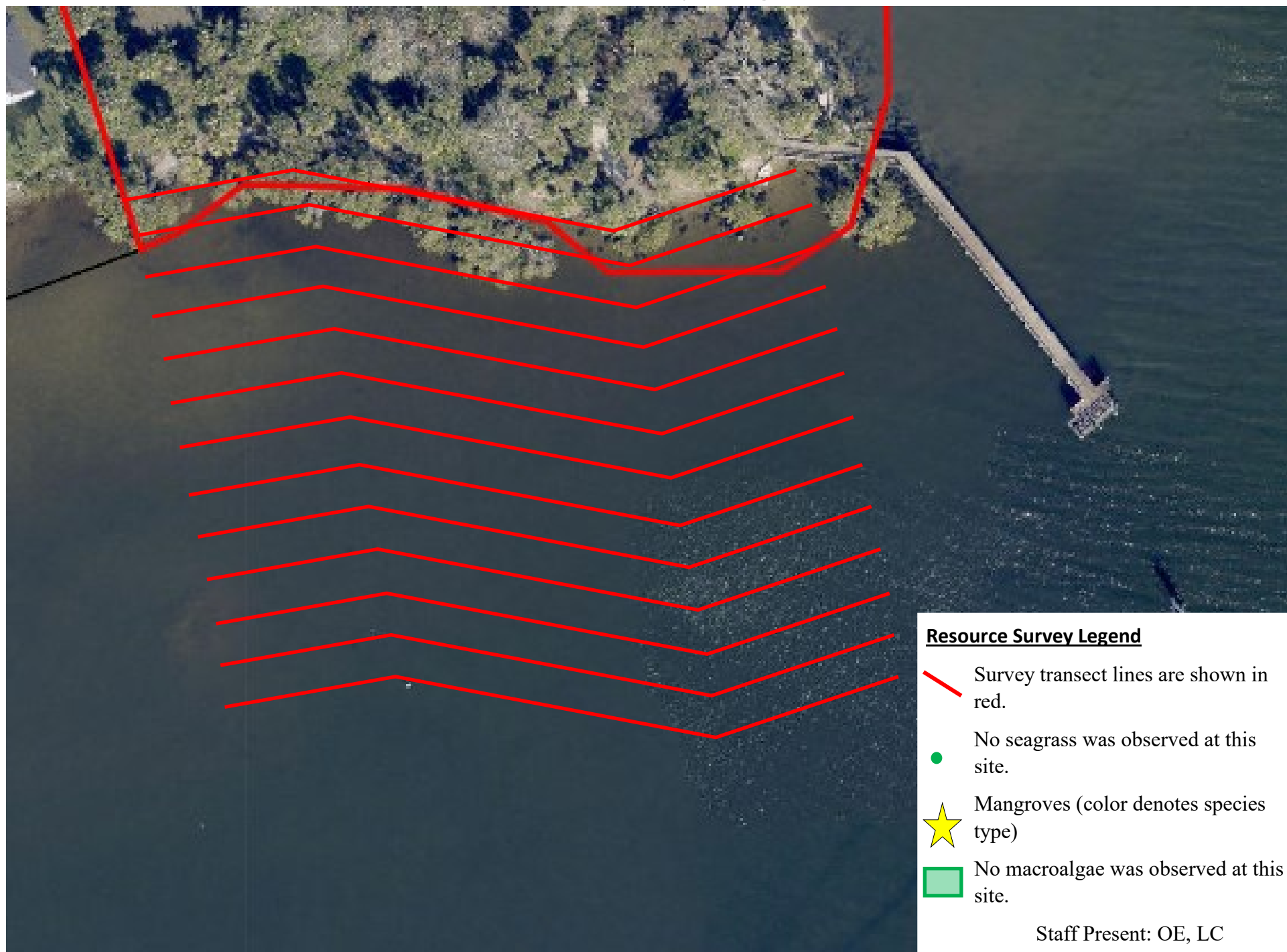
Turkey Creek Oyster Project - Castaway Pt. Park

Property Boundaries



Turkey Creek Oyster Project - Castaway Pt. Park

Resource Survey, August 2024



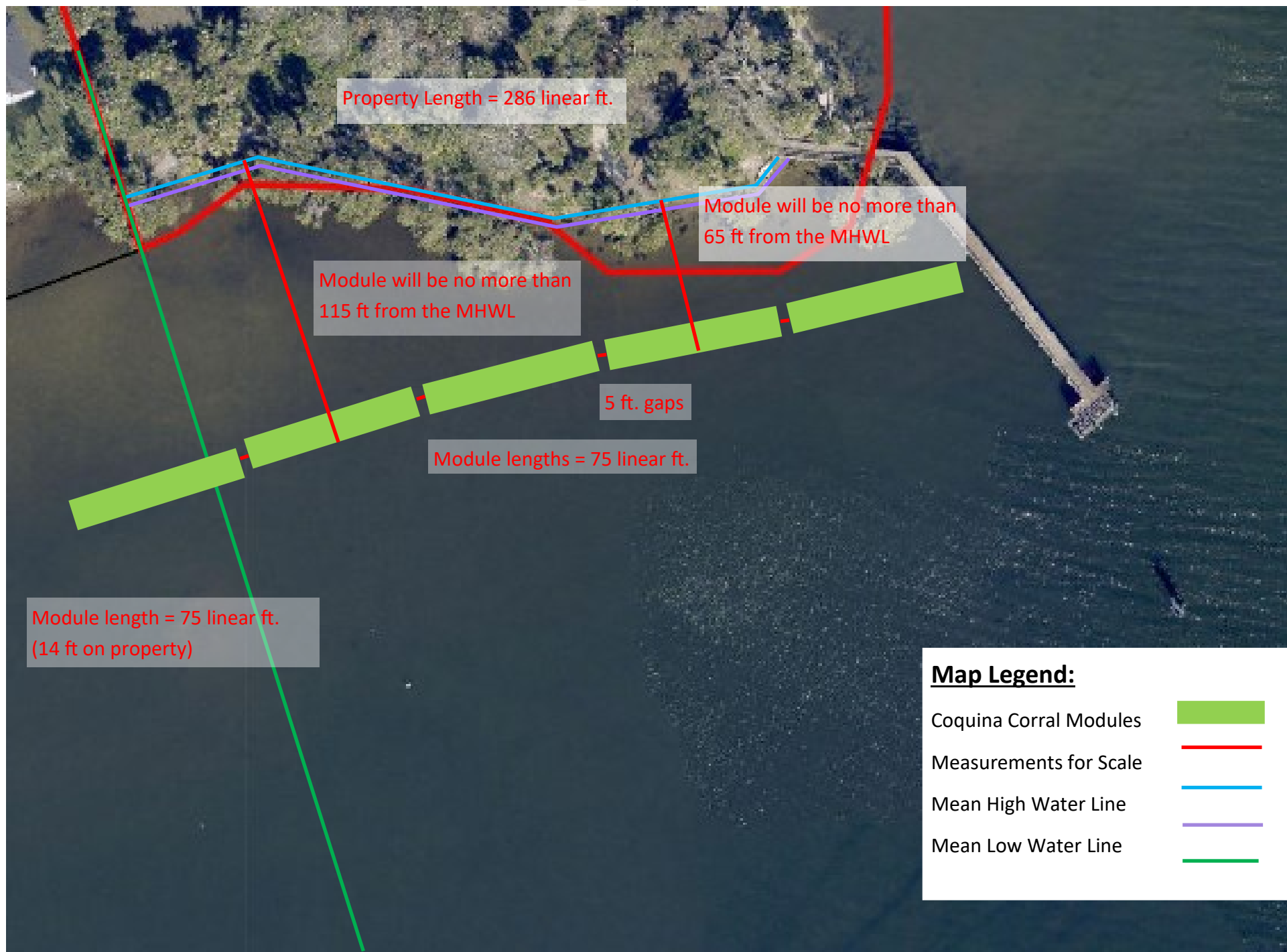
Turkey Creek Oyster Project - Castaway Pt. Park

Property Boundaries



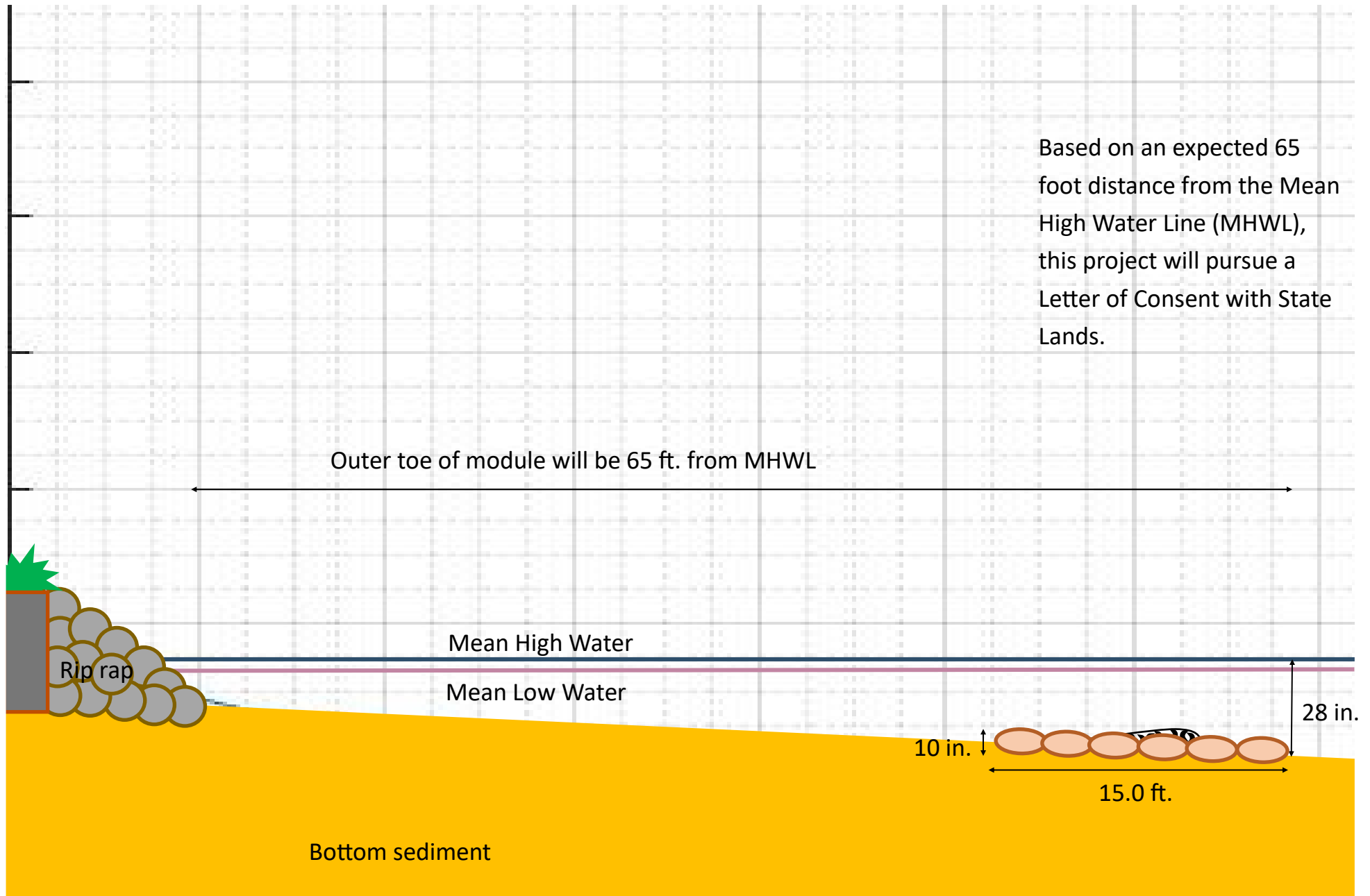
Turkey Creek Oyster Project - Castaway Pt. Park

Property Boundaries



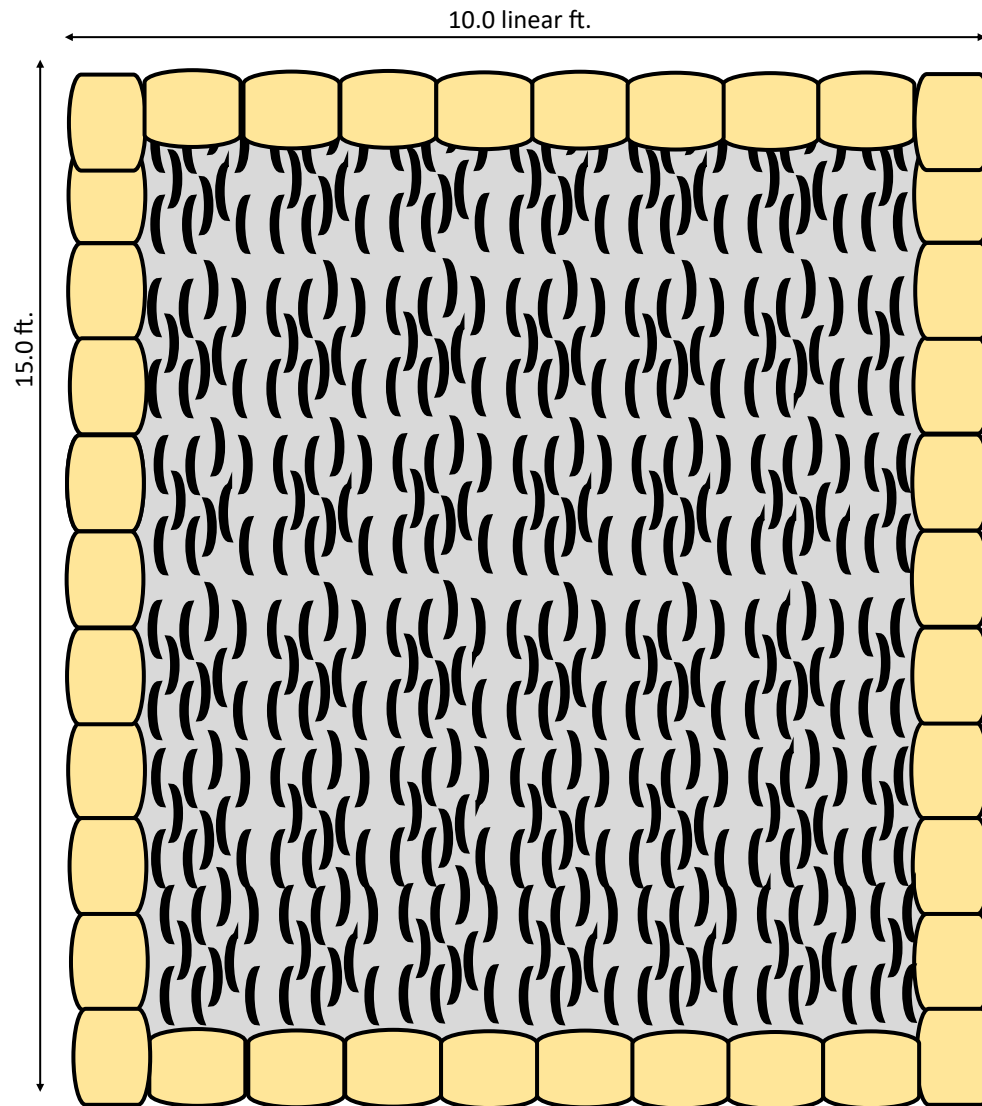
Turkey Creek Oyster Project - Castaway Pt. Park

Profile view of an oyster coquina reef



Turkey Creek Oyster Project - Castaway Pt. Park

Top down view of oyster coquina module



Base Layer - Coquina rock and loose cultch

Coquina rock as perimeter border - placed on top of bare sediment. Interior of the coquina corral is filled with loose shell cultch.

Coquina Dimensions:

12" L X 10" W X 10" H

Sizes can vary based for coquina, but widths will not exceed 10" in order to ensure module footprint is accurate.

Example uses a 10 ft. module to provide a detailed view. The design calls for four 75 ft. modules which would require a total of 98 rocks on the base layer each.