









NOTES:

- 2-1. DO NOT SOD DRY POND BOTTOMS OR POND SIDE SLOPES UNLESS WITH SAND GROWN SOD WITH PERCOLATION RATE APPROVED BY CIVIL ENGINEER. SIDE SLOPES MUST BE SODDED. POND BOTTOM DOES NOT.

PLANT SCHEDULE:

LEGEND	QUANTITY	SPECIFICATIONS	COMMON NAME
	120	3 GAL (2" HT.) PLANT 3 O.C.	PODOCARPUS
	2	30 GAL (10' HT. 2.5" DBH)	LIVE OAK
	7	30 GAL (10' HT. 2.5" DBH)	DAHOON HOLLY
	4	6' HT. OR 6" DBH	PALM TREE
	12	30 GAL (10' HT. 2.5" DBH)	MAGNOLIA
	4	8' HT., 1" CALIPER 2" SPREAD, MULTI-STEM	MUSKOGEE GRAPE MYRTLE
	409 SF	1 GAL., 3" O.C., 18" HT.	MONKEY GRASS
	12571 SF	-	UNDISTURBED VEGETATION

LANDSCAPING CALCULATIONS:

10'. LANDSCAPE BUFFER BETWEEN VEHICULAR USE AREA AND RIGHT OF WAY.  
EAST PROPERTY LINE: 161 LF / 30 LF = 5 TREES (0 EXISTING, 9 PROPOSED)

10'. LANDSCAPE BUFFER BETWEEN VEHICULAR USE AREA AND NON-RIGHT-OF-WAY.  
WEST PROPERTY LINE: 363 LF / 35 LF = 17 TREES (14 EXISTING, 3 PROPOSED)  
SOUTH PROPERTY LINE: 356 LF / 35LF = 10 TREES (2 EXISTING, 8 PROPOSED)  
NORTH PROPERTY LINE: 275 LF / 35LF = 8 TREES (6 EXISTING, 5 PROPOSED)

INTERIOR PARKING LANDSCAPE REQUIRED:  
16,400 SF TOTAL = 1,636 SF OF INTERIOR LANDSCAPE REQUIRED, 1,632 SF / 200 SF = 8 TREES REQUIRED  
INTERIOR PARKING LANDSCAPE PROVIDED = 1,958 SF  
0 TREES PROVIDED = 8 NEW TREES

TOTAL TREES REQUIRED: 5 + 17 + 10 + 8 + 8 = 48 TREES REQUIRED

TOTAL TREES PROVIDED: 2 + 7 + 4 + 4 + 12 + 26 = 55 TREES (26 EXISTING, 29 PROPOSED)

PROVIDED 55 TREES – 48 REQUIRED TREES = 7

PEDESTRIAN ZONE LANDSCAPING  
PEDESTRIAN ZONE REQUIRED 2 TREES PER ZONE  
1 ZONES X 2 TREES PER ZONE = 2 TREES REQUIRED  
2 TREES PROVIDED

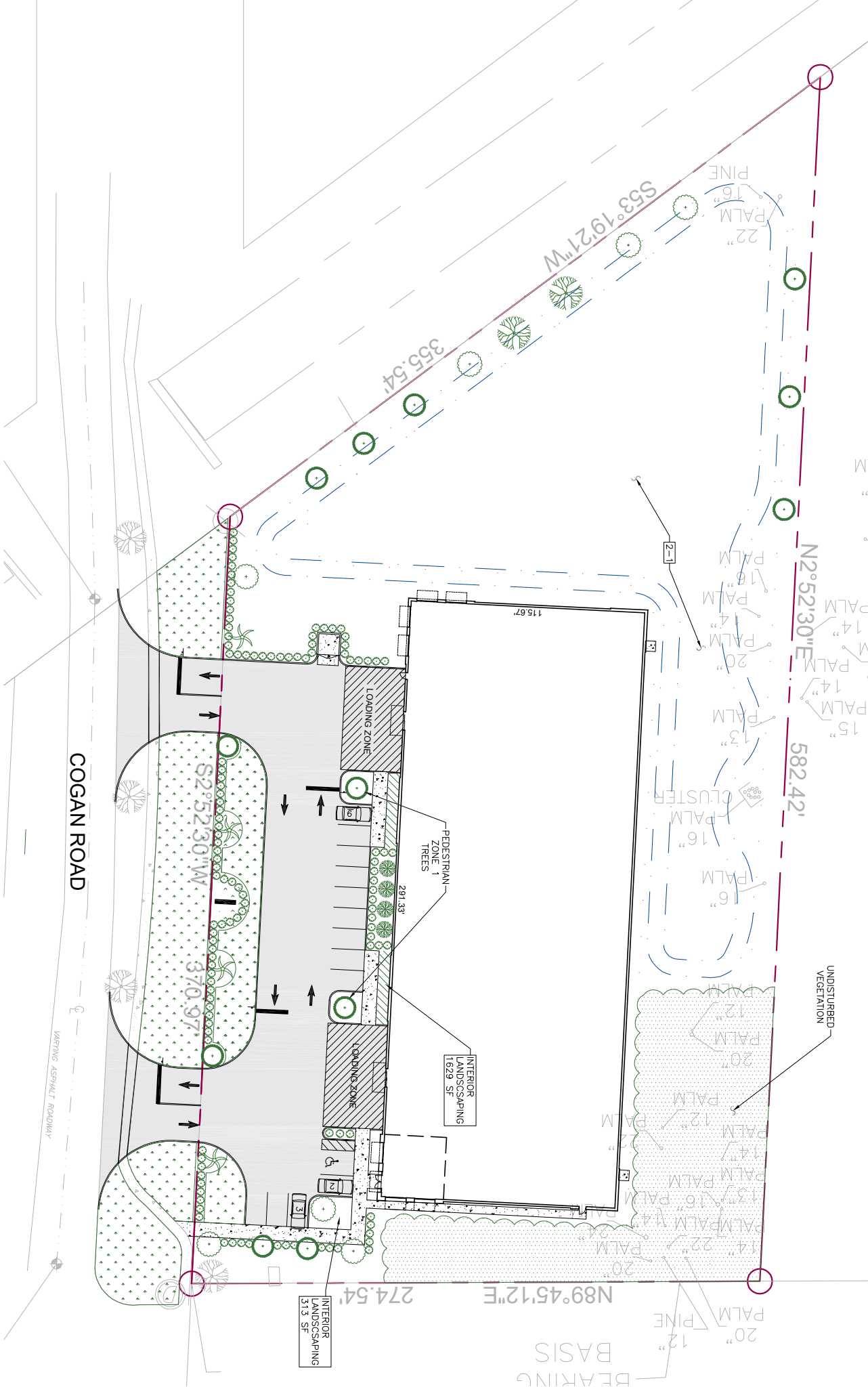
NOTE: PEDESTRIAN ZONE EXCLUDES THE REAR OF THE BUILDING.

REPLACEMENT TREES  
ABOVE CALCULATIONS DOES NOT INCLUDE REPLACEMENT TREES.  
REMOVED TREES: 2-12", 4-13", 4-14", 3-15", 3-18", 1-20" = 251" OF TREES BEING REMOVED  
251"/6" TREE REPLACEMENT = 42 TREES REQUIRED  
42 REQUIRED – 42 REPLACEMENT = 0 TREES  
COST FOR TREE FUND = \$350 PER TREE = \$350 X 42 TREES = \$14,700

LANDSCAPING NOTES:

- ALL ON-SITE DISTURBED GREEN AREAS NOT IDENTIFIED FOR LANDSCAPING OR TREE PRESERVATION SHALL BE SODDED WITH BAHIA SOD. DO NOT SOD DRY RETENTION PONDS EXCEPT AS NOTED OTHERWISE.
- LANDSCAPE PLANTS AND PLANTING METHODS SHALL MEET OR EXCEED ALL REQUIREMENTS HEREIN AND ALL CITY OF PALM BAY LAND DEVELOPMENT CODE REQUIREMENTS.
- AUTOMATIC SPRINKLER SYSTEM SHALL BE DESIGNED AND INSTALLED BY IRRIGATION CONTRACTOR FOR ALL LANDSCAPED AREAS IDENTIFIED ON-SITE EXCEPT DRY RETENTION POND. IRRIGATION CONTRACTOR SHALL COORDINATE ELECTRICAL SERVICE AS NEEDED. IRRIGATION SOURCE SHALL BE A NEW WELL, LOCATION DETERMINED BY OWNER.
- PRIOR TO CERTIFICATE OF COMPLETION, A MINIMUM 60% VEGETATIVE COVER MUST BE ESTABLISHED.
- BAHIA SOD EXCEPT DRY RETENTION POND
- SHRUBS SHALL BE PLANTED AT LEAST 3.5' FROM THE BACK OF CURB.

LANDSCAPE PLAN



REVISION	DATE	REV#

2651 Eau Gallie Blvd., Suite A  
Melbourne, FL 32935  
  
Tel. 321.253.1221  
www.cogengineering.com  
COA #0008097



CONSTRUCTION  
ENGINEERING  
GROUP  
Consulting Engineers

COGAN ROAD SELF-STORAGE

STEIN INVESTMENT GROUP  
COGAN DR SE, PALM BAY, FL 32909

DRAWING TITLE  
LANDSCAPE PLAN

CONSTRUCTION ENGINEERING GROUP  
2651 Eau Gallie Blvd., Suite A  
Melbourne, FL 32935  
Tel. 321.253.1221  
www.cogengineering.com  
COA #0008097

DATE	5/7/24
SCALE	1"=30'
PROJ. NO. :	230074
DESIGNED BY:	WGGM
DRAWN BY:	NCW
CHECKED BY:	JTW
DRAWING NO.	L-1