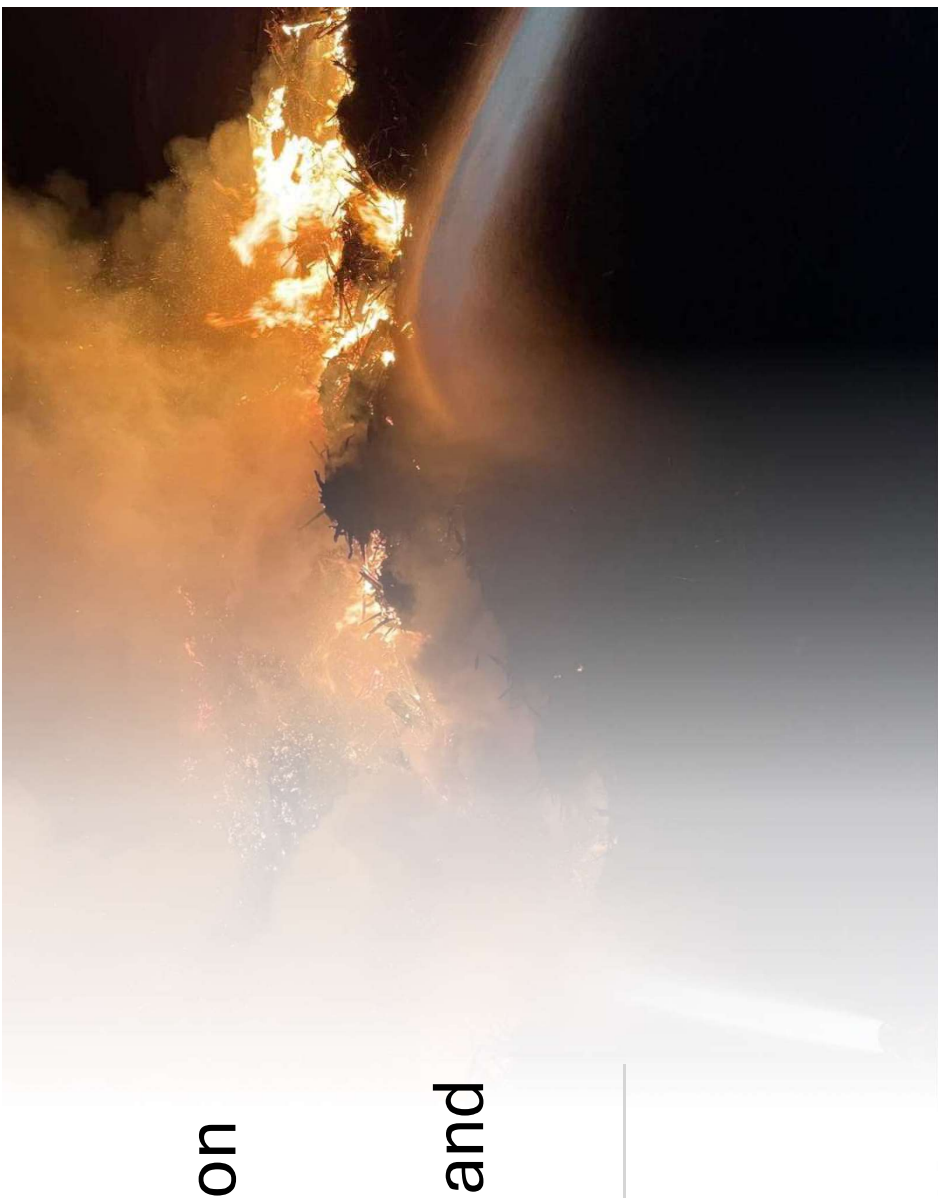




The Foundation
Project is a
danger to the
environment and
the Public



Impacts



Destruction of
Wetlands



Potential drinking
water contamination



Huge fire risk



Debris can be
projectiles in a
hurricane

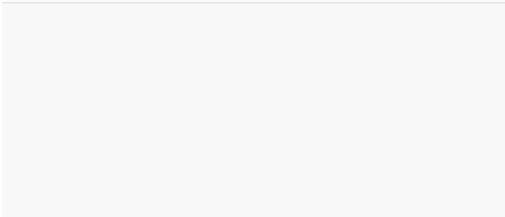


Noise levels will
impact wildlife and
neighbors



Dust will impact
wildlife and
neighbors

Date of initial
Permit
Approval





**Florida Department of
Environmental Protection**
Ron McCreary, Director
John McCreary, Deputy Director
Madeline Pridemore, Secretary

July 17, 2023

Ms. Chris
All Pro Land Clearing
430 Eastern Forest Circle
Palm Bay, FL 32909

Dear Lisa Chen:

Your registration application for All Pro Land Clearing, located at Cornwell Street SE, Melbourne, in Brevard County has been received. The application indicated this facility is operating as is:

☐ Yard Trash Recycling Facility

☐ Yard Trash Transfer Station

☐ Mobile Batching Operation

☐ Vegetation, Animal Byproducts or Manure Composting Facility

And processing the following:

☒ Yard Trash (including clear wood)

☐ Manure

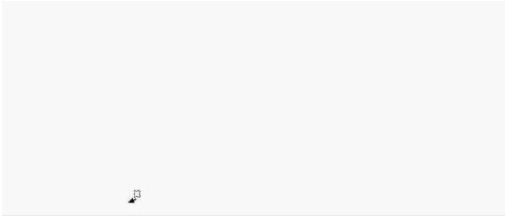
☐ Organic byproducts (composting)

☐ Vegetative wastes (composting)

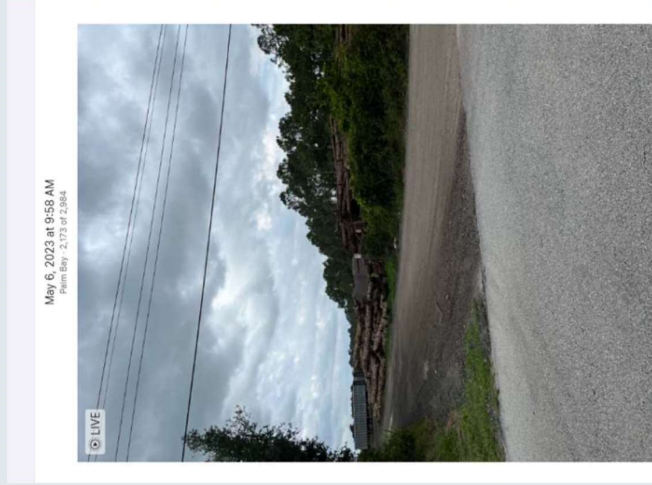
☐ Pre-consumer vegetative (composting)

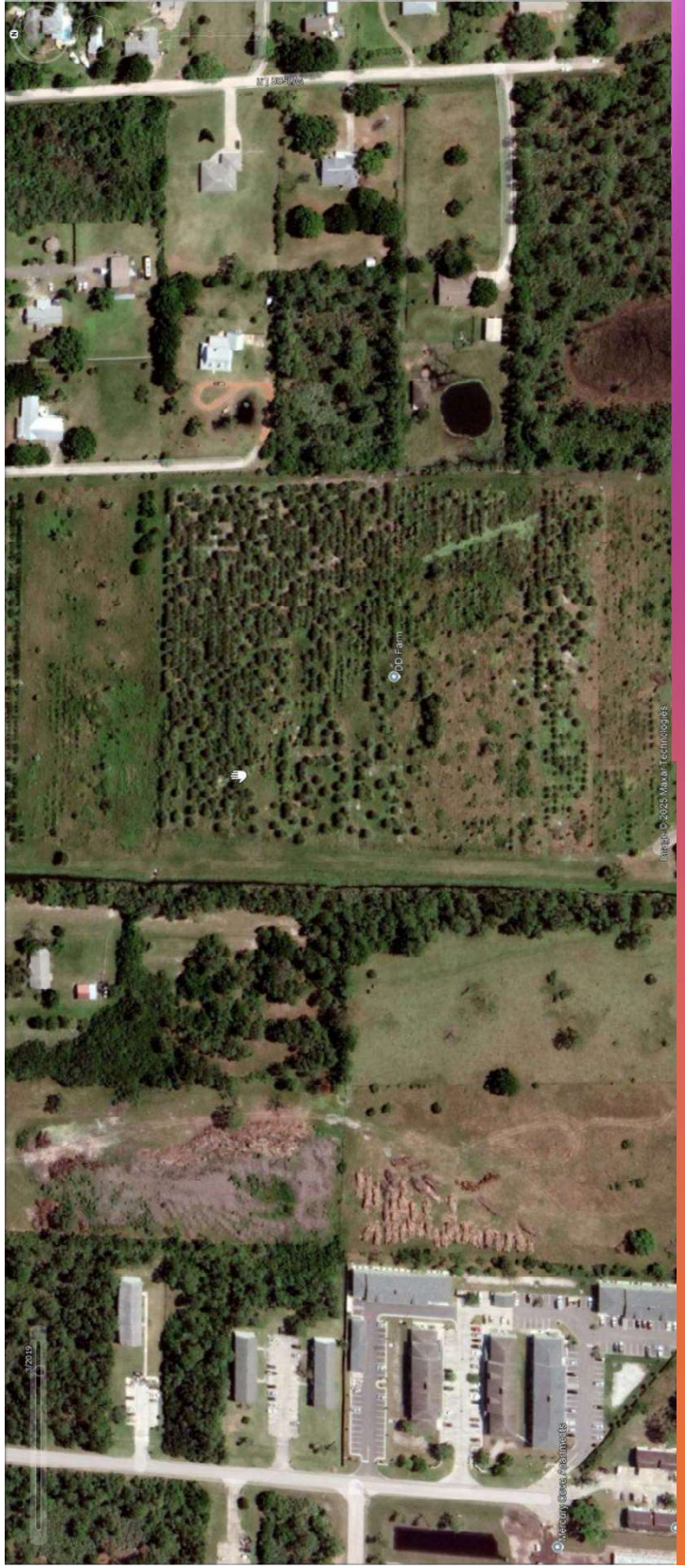
The registration application is complete, and is valid until August 1, 2024. The WMCS identification number for this facility is 03.07362. The next number for the registration fee you paid is.

You must comply with the requirements specified in Rule 62-709.320, and Rules 62-709.330 or 62-709.350, and the Department's Administrative Code, Chapter 62-709. You must maintain qualification for the registration program. A summary of the operating requirements is enclosed.



Pictures taken May 6, 2023





Google Earth Image 3/2019

Notice of Non-compliance

ALL PRO LAND CLEARING
Inspection Date 08/29/2024

Page 4 of 5

Current Violations:

Rule: 62-709.300(2)(a)1

Question Number: 10.1.1

Explanation: The facility failed to display a sign designating the site as a source separated organic processing facility with the operating hours.

Corrective Action: Display a sign designating the site as a source separated organic processing facility with the operating hours. A 10/18/2024 email confirms correction.

Rule: 62-701.300(3), 62-706.300(7)(b)

Question Number: 10.3

Explanation: The facility failed to report a fire at the facility.

Corrective Action: Ensure all fires at the facility are reported to the Department.

Comments

Facility setbacks were good. No burning was noted. Dues and litter are controlled by a water-fir truck for dust, and a person picks up litter. Fire control is by a water fire truck, loaders, and fire extinguishers. The perimeter road was good and no piles were more than 100 feet wide. The piles were high, but manageable. The facility has a property month to month leasing agreement on an extended time frame. Pete St. Lawrence, Kerry Hink, and AJ Caspiani were also present during the inspection.

Spontaneous Combustion Fire Around Nov 5,
2023



Link to News Story on the Fire

- [Here's why you may see heavy smoke in this Florida city for the next couple of days | FOX 35 Orlando](#)

FOX 35


Live News Weather Good Day We Love Florida Contests More

Q

Here's why you may see heavy smoke in this Florida city for the next couple of days

By FOX 35 News Staff | Updated: November 6, 2023 1:49pm EST | Palm Bay | FOX 35 Orlando |

Large mulch fire causing heavy smoke in Palm Bay



Large mulch fire causing heavy smoke in Palm Bay

A large mulch fire in Brevard County could cause some heavy smoke in the air for a day or two, officials said.

PALM BAY, Fla. - A large mulch fire in Brevard County could cause some heavy smoke in the air for a day or two, officials said.

The fire is burning in an open area of land away from homes and buildings.

COFACTR

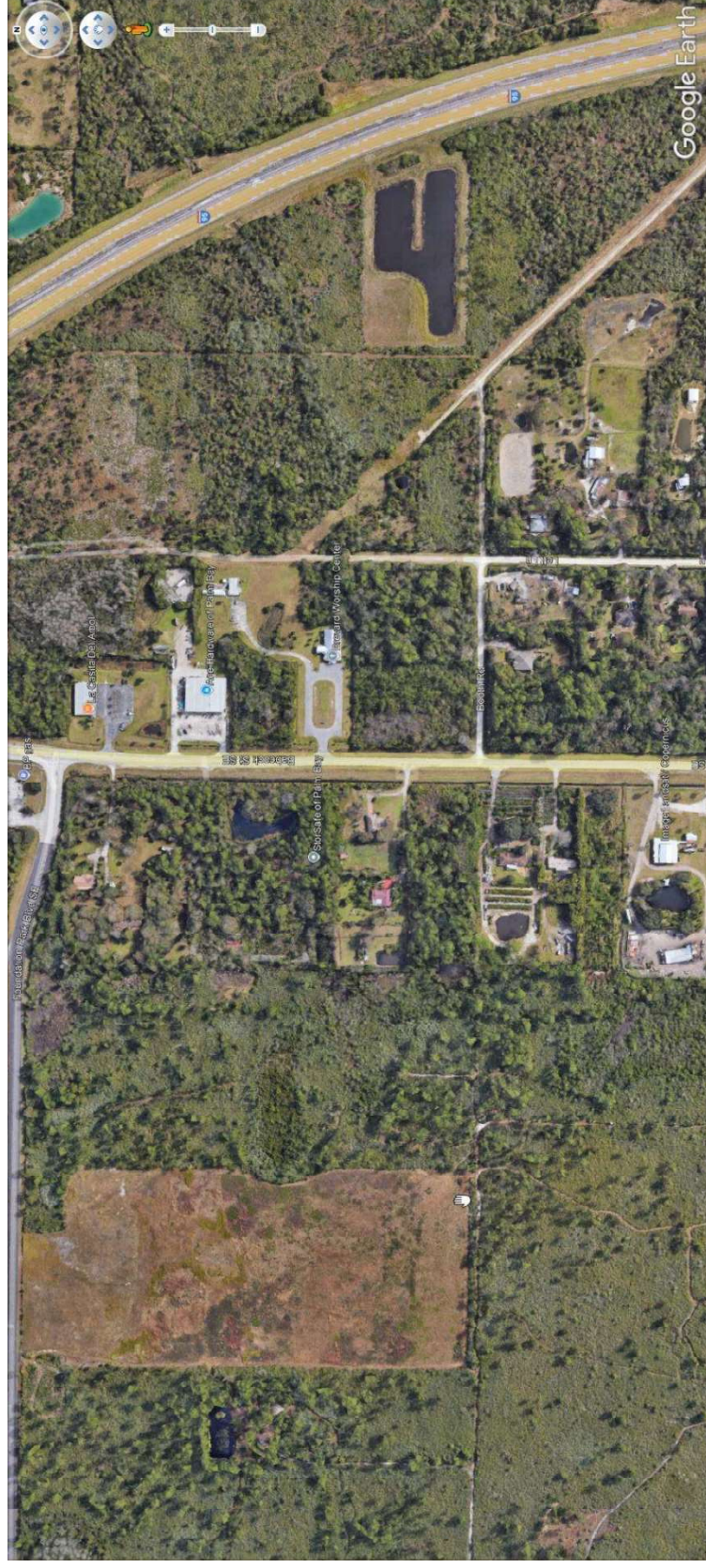
Electronics Procurement

CoFactr | Electronics Logistics & Procurement

1-800-828-7343

B2B Procurement

0001



Forested Wetlands in the Danger Zone

Another Fire around Nov 2024

This email originated outside of DEP. Please use caution when opening attachments, clicking links, or responding to this email.

EXTERNAL MESSAGE

Hi! I hope all is well, and you had a wonderful Thanksgiving!

Although I do believe this does not fit into the requirements for reporting, we wanted to make you aware that while in the process of moving a mulch pile it decided to shed a bit of smoke this morning As a result, an area neighbor called Malabar Fire department, and they dispatched We were onsite when they arrived and already in the process of covering it with dirt - there was no action performed by the fire department nor needed, no open flame and we handled it within minutes. We have since filled the area with dirt and will continue to monitor it.

Just wanted to be transparent and fully compliant 🙏 thx! Lisa 321-514-4928

Respectfully,

Michael and Lisa Cram

-All Pro Land Clearing & Stenwork Inc.
Office: 321-720-4849
info@allprolandclearing.com
www.allprolandclearing.com
www.heavybrushmowing.com

From: Kane, Phil <Phil.Kane@FloridaDEP.gov>
Sent: Friday, October 18, 2024 8:29 AM
To: Jo Cerepani <jc11111@heavybrushmowing.com>
Cc: Lisa Cram <lisa@allprolandclearing.com>; Smichenko, David <David.Smichenko@FloridaDEP.gov>
Subject: RE: Hours of Operation

Excellent photograph answering the signage and operation hours concern.

Thank you and have a great day and weekend!

Happy Birthday Lisa!

phil



Current Operation