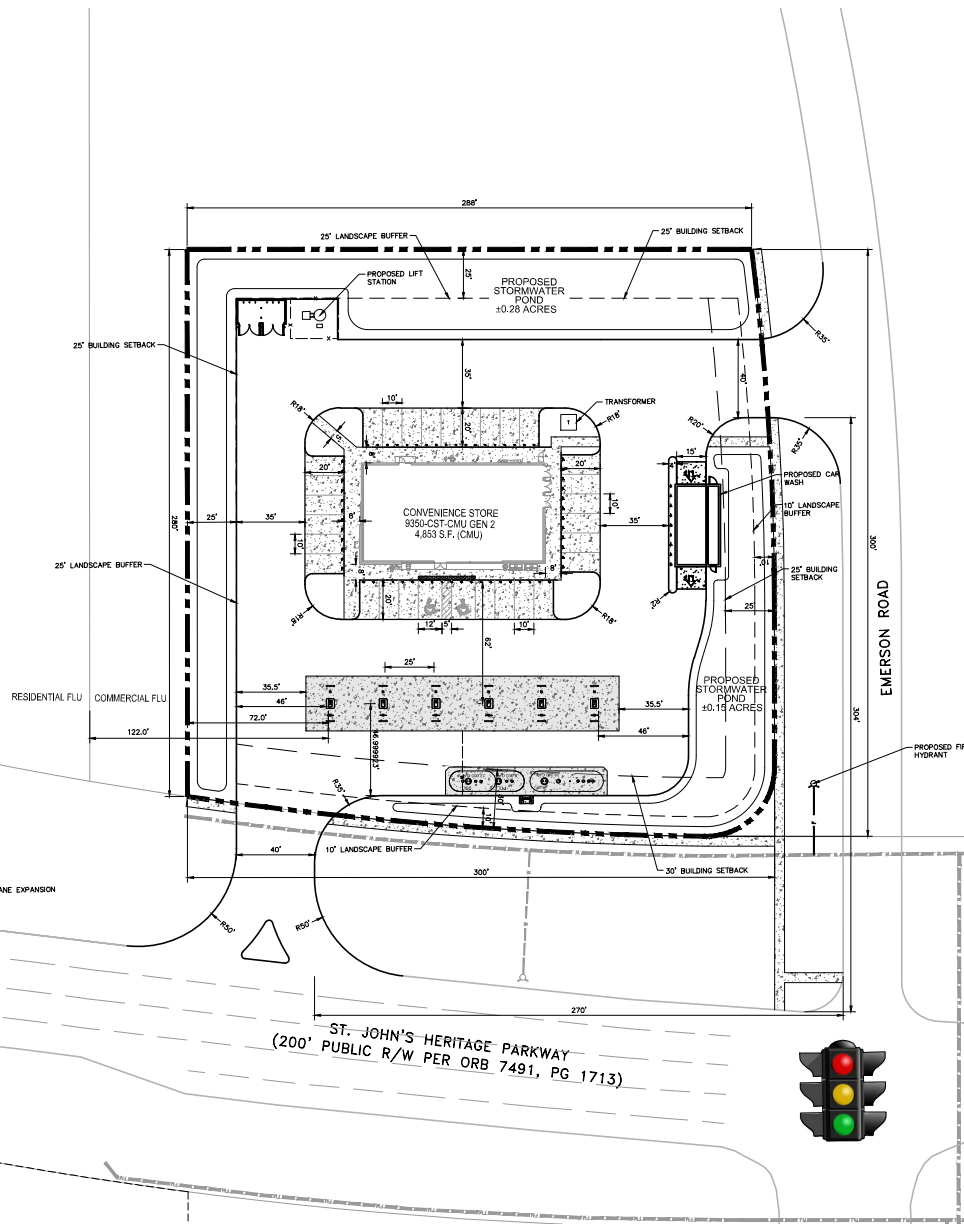


K:\ORL_CAD\34918806-7-11 Palm Bay\CAD\CONCEPT\SP-03.dwg



SITE DATA:

PARCEL AREA:	2.00 ACRES (87,104 SF)
FUTURE LAND USE:	COM (COMMERCIAL)
EXISTING ZONING:	COMMUNITY COMMERCIAL
PROPOSED ZONING:	N/A
MAX. ALLOWED BUILDING HEIGHT:	10'
PROPOSED BUILDING HEIGHTS:	35' MAX

PROPOSED IMPERVIOUS AREA

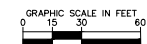
BUILDING AREA:	4,853 SF
ASPHALT AREA:	43,538 SF
CONCRETE AREA:	5,360 SF
SIDEWALK LENGTH:	371 LF
CURB LENGTH:	2,161 LF

PARKING REQUIRED:

1 SPACE / 200 SF	24 SPACES
4,853 SF BUILDING	24 SPACES
TOTAL SPACES REQUIRED	24 SPACES

PARKING PROVIDED:

PROPOSED HANDICAP SPACES (12'x20')	2 SPACES
PROPOSED REGULAR SPACES (10'x20')	28 SPACES
PROPOSED ON-SITE SPACES:	30 SPACES



ST. JOHN'S HERITAGE PARKWAY &
EMERSON ROAD

PALM BAY, FL

CONCEPTUAL SKETCH

09/18/2024 - CONTACT DEREK E. RAMSBURG, P.E. (407) 427-1642

SP-03

Kimley»Horn