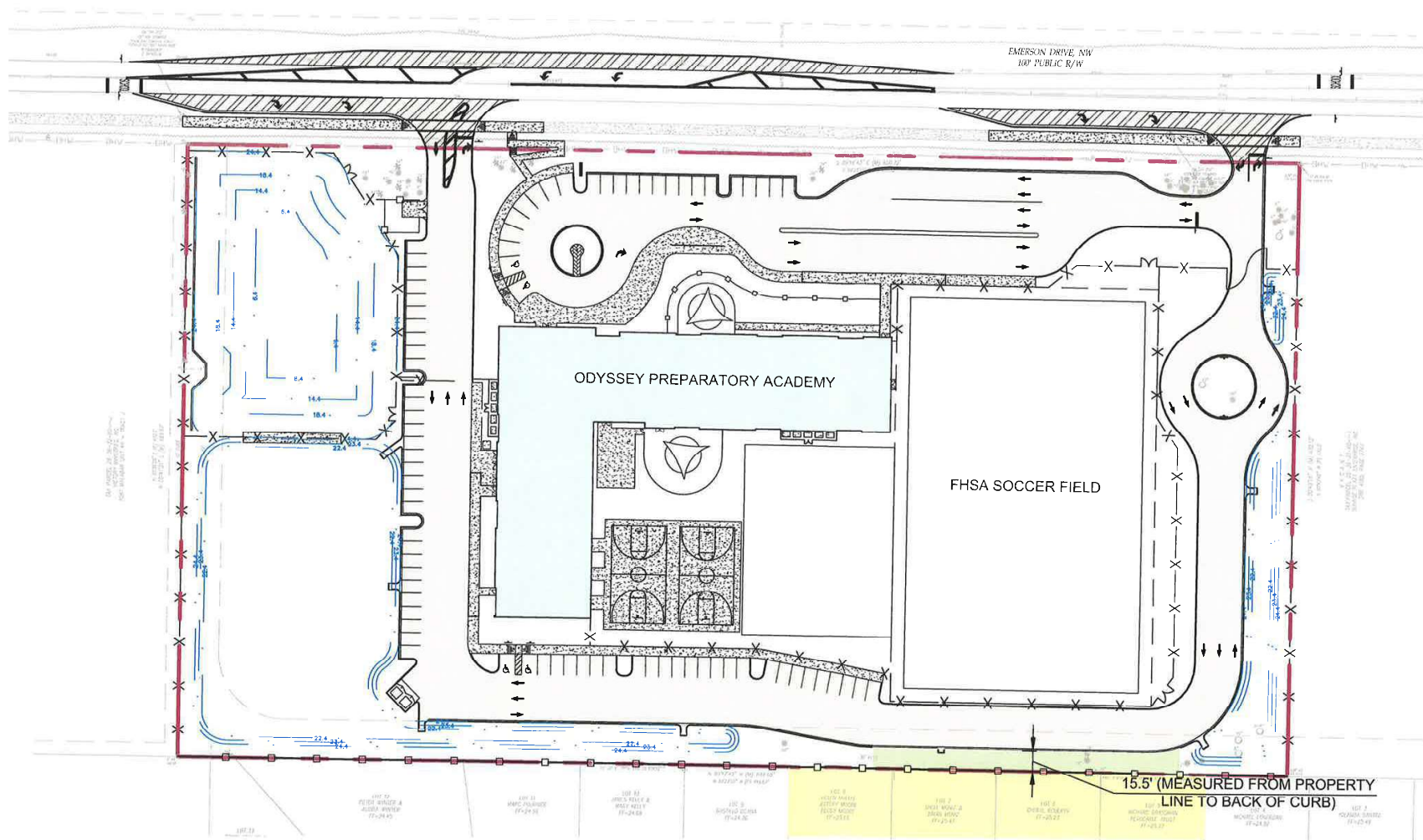


V24-00003 SUBMITTED BY JAKE WISE AT 7/16/2024 PdZ

NOTE:
NC ZONING REQUEST MINIMUM
PAVEMENT SETBACK REDUCED
FROM 25' TO 15.5'

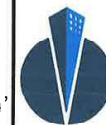


ODYSSEY PREPARATORY ACADEMY
PAVEMENT SETBACK VARIANCE EXHIBIT

$$\overline{1''=80'}$$


15.5' (MEASURED FROM PROPERTY
LINE TO BACK OF CURB)

04-01-24	OPAV-01
----------	---------



**CONSTRUCTION
ENGINEERING
GROUP**
Consulting Engineers

2651 Eau Gallie Blvd., Suite A
Melbourne, FL 32935

Tel. 321.253.1221
www.ceengineering.com
COA #0008097

