

School Board of Brevard County

2700 Judge Fran Jamieson Way • Viera, FL 32940-6699

Dr. Robert E. Schiller, Ed.D., Interim Superintendent



February 22, 2023

Mr. Jesse Anderson, Ph.D
Assistant Growth Management Director
City of Palm Bay
Growth Management Department
120 Malabar Road SE
Palm Bay, Florida 32907

**RE: Proposed Micco Park Village District Development
School Impact Analysis – Capacity Determination CD-2023-06**

Dear Mr. Anderson,

We received a completed *School Facility Planning & Concurrency Application* for the referenced development. The subject property is comprised of multiple parcels, please see list attached, containing a total of approximately 353.47 acres in the City of Palm Bay, Florida. The proposed development includes 773 single family homes and 487 multi-family homes. The School Impact Analysis of this proposed development has been undertaken and the following information is provided for your use.

The calculations used to analyze the prospective student impact are consistent with the methodology outlined in Section 13.2 and Amended Appendix "A"-School District Student Generation Multiplier (approved April 11, 2022) of the *Interlocal Agreement for Public School Facility Planning & School Concurrency (ILA-2014)*. The following capacity analysis is performed using capacities/projected students as shown in the *Brevard County Public Schools Financially Feasible Plan for School Years 2022-23 to 2027-28* which is attached for reference.

	Multi Family		Single Family		Both
	487		773		
Students Generated	Student Generation Rates	Calculated Students Generated	Student Generation Rates	Calculated Students Generated	Rounded Number of Students Generated
Elementary	0.11	53.57	0.24	185.52	239
Middle	0.02	9.74	0.07	54.11	64
High	0.05	24.35	0.12	92.76	117
Total	0.18	87.66	0.43	332.39	420

Planning & Project Management
Facilities Services
Phone: (321) 633-1000 x11418 • FAX: (321) 633-4646



An Equal Opportunity Employer

**FISH Capacity (including relocatable classrooms) from the
Financially Feasible Plan (FFP) Data and Analysis for School Years 2023-24 to 2027-28**

School	2023-24	2024-25	2025-26	2026-27	2027-28	2028+
Sunrise	913	913	935	1,023	1,067	1,067
Southwest	1,230	1,230	1,230	1,289	1,289	1,289
Bayside	2,263	2,263	2,263	2,263	2,382	2,382

Projected Student Membership

School	2023-24	2024-25	2025-26	2026-27	2027-28	2028+
Sunrise	767	836	908	1,004	1,067	1,067
Southwest	920	1,024	1,127	1,174	1,285	1,285
Bayside	1,885	2,023	2,099	2,175	2,371	2,371

Students Generated by Newly Issued SCADL Reservations Since FFP

School	2023-24	2024-25	2025-26	2026-27	2027-28	2028+
Sunrise	-	-	-	-	-	-
Southwest	-	-	-	-	-	-
Bayside	-	-	-	-	-	-

**Cumulative Students Generated by
Proposed Development**

School	2023-24	2024-25	2025-26	2026-27	2027-28	2028+
Sunrise	-	-	29	101	209	239
Southwest	-	-	8	28	56	64
Bayside	-	-	14	50	102	117

**Total Projected Student Membership (includes
Cumulative Impact of Proposed Development)**

School	2023-24	2024-25	2025-26	2026-27	2027-28	2028+
Sunrise	767	836	937	1,105	1,276	1,306
Southwest	920	1,024	1,135	1,202	1,341	1,349
Bayside	1,885	2,023	2,113	2,225	2,473	2,488

**Projected Available Capacity =
FISH Capacity - Total Projected Student Membership**

School	2023-24	2024-25	2025-26	2026-27	2027-28	2028+
Sunrise	146	77	(2)	(82)	(209)	(239)
Southwest	310	206	95	87	(52)	(60)
Bayside	378	240	150	38	(91)	(106)

At this time, Sunrise Elementary School, Southwest Middle School and Bayside High School are not projected to have enough capacity for the total of projected and potential students from the Micco Park Village District development. Because there is a shortfall of available capacity in the concurrency service area, the capacity of adjacent concurrency service areas must be considered.

The adjacent elementary school concurrency service areas are Port Malabar Elementary School, Columbia Elementary School, and Westside Elementary School. The adjacent middle school concurrency service area is Stone Magnet Middle. The adjacent high school concurrency service area is Palm Bay Magnet Senior High. A table of capacities of the *adjacent Schools Concurrency Service Areas* that may accommodate the impacts of the Micco Park Village District development is shown below:

FISH Capacity (including relocatable classrooms) from the Financially Feasible Plan (FFP) Data and Analysis for School Years 2023-24 to 2027-28						
School	2023-24	2024-25	2025-26	2026-27	2027-28	2028+
Port Malabar	852	852	852	852	852	852
Columbia	751	751	751	751	751	751
Stone	1,076	1,076	1,076	1,076	1,076	1,076
Palm Bay	2,657	2,657	2,657	2,657	2,657	2,657
Projected Student Membership						
School	2023-24	2024-25	2025-26	2026-27	2027-28	2028+
Port Malabar	640	683	746	760	795	795
Columbia	512	531	522	538	538	538
Stone	708	799	823	890	977	977
Palm Bay	1,495	1,581	1,683	1,704	1,700	1,700
Students Generated by Newly Issued SCADL Reservations Since FFP						
School	2023-24	2024-25	2025-26	2026-27	2027-28	2028+
Port Malabar	-	-	-	-	-	-
Columbia	-	-	-	-	-	-
Stone	6	6	6	6	6	6
Palm Bay	15	15	15	15	15	15
Cumulative Students Generated by Proposed Development						
School	2023-24	2024-25	2025-26	2026-27	2027-28	2028+
Port Malabar	-	-	29	101	209	239
Columbia	-	-	29	101	209	239
Stone	-	-	8	28	56	64
Palm Bay	-	-	14	50	102	117
Total Projected Student Membership (includes Cumulative Impact of Proposed Development)						
School	2023-24	2024-25	2025-26	2026-27	2027-28	2028+
Port Malabar	640	683	775	861	1,004	1,034
Columbia	512	531	551	639	747	777
Stone	714	805	837	924	1,039	1,047
Palm Bay	1,510	1,596	1,712	1,769	1,817	1,832
Projected Available Capacity = FISH Capacity - Total Projected Student Membership						
School	2023-24	2024-25	2025-26	2026-27	2027-28	2028+
Port Malabar	212	169	77	(9)	(152)	(182)
Columbia	239	220	200	112	4	(26)
Stone	362	271	239	152	37	29
Palm Bay	1,147	1,061	945	888	840	825

At this time, the adjacent middle school and high school concurrency areas are projected to have enough capacity for the total of projected and potential students from the Micco Park Village District development; however, there is a shortfall of available capacity in the concurrency service area and the adjacent concurrency service areas for elementary schools.

Before this project is submitted for final school concurrency determination, please contact our staff to discuss the mitigation process as defined in Section 13.5 of the *ILA-2014*. The district is closely monitoring rapid development in this area.

This is a **non-binding** review; a *Concurrency Determination* must be performed by the School District prior to a Final Development Order and the issuance of a Concurrency Evaluation Finding of Nondeficiency by the Local Government.

We appreciate the opportunity to review this proposed project. Please let us know if you require additional information.

Sincerely,

A handwritten signature in blue ink, appearing to read 'Karen Black', with a stylized flourish at the end.

Karen M. Black, AICP
Manager – Facilities Planning & Intergovernmental Coordination
Planning & Project Management, Facilities Services

Enclosure: *Brevard County Public Schools Financially Feasible Plan for School Years 2022-23 to 2027-28*

Copy: Susan Hann, AICP, Assistant Superintendent of Facility Services
File CD-2023-06

David G. Lindemann, AICP, Director of Planning & Project
Management, Facilities Services
File CD-2023-06

School Board of Brevard County Micco Park Village District

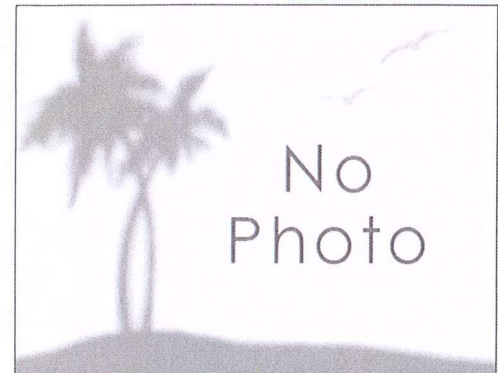


Properties:

Account: 3000715

[MapView](#)[EagleView](#)

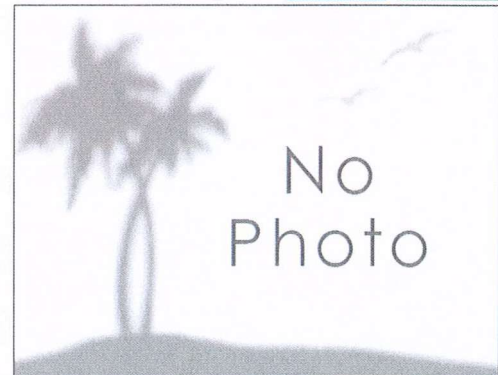
Owners:	PEAT HOLDING LLC <i>Wrong ownership? Maybe this is why...</i>
Mail Address:	7457 PARK LANE RD LAKE WORTH FL 33449
Site Address:	1998 MICCO RD PALM BAY FL 32976
Parcel ID:	30-37-12-00-500
Taxing District:	34U0 - PALM BAY
2022 Exemptions:	NONE <i>Wrong exemption? Maybe this is why...</i>
Property Use:	6120 - GRAZING LAND - SOIL CAPABILITY CLASS II - WITH BUI
Total Acres:	160
Site Code:	0001 - NO OTHER CODE APPL.
Plat Book/Page:	0000/0000
Subdivision Name:	--
Land Description:	SW 1/4

[Estimate Property Taxes](#)

Account: 3000718

[MapView](#)[EagleView](#)

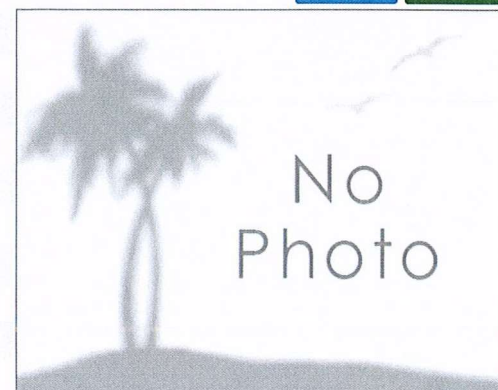
Owners:	PEAT HOLDING LLC <i>Wrong ownership? Maybe this is why...</i>
Mail Address:	7457 PARK LANE RD LAKE WORTH FL 33449
Site Address:	2000 MICCO RD PALM BAY FL 32976
Parcel ID:	30-37-13-00-2
Taxing District:	34U0 - PALM BAY
2022 Exemptions:	NONE <i>Wrong exemption? Maybe this is why...</i>
Property Use:	6120 - GRAZING LAND - SOIL CAPABILITY CLASS II - WITH BUI
Total Acres:	197
Site Code:	0001 - NO OTHER CODE APPL.
Plat Book/Page:	0000/0000
Subdivision Name:	--
Land Description:	W 37 AC OF NE 1/4, ALL NW 1/4, EXC RD R/W

[Estimate Property Taxes](#)

Account: 3010667

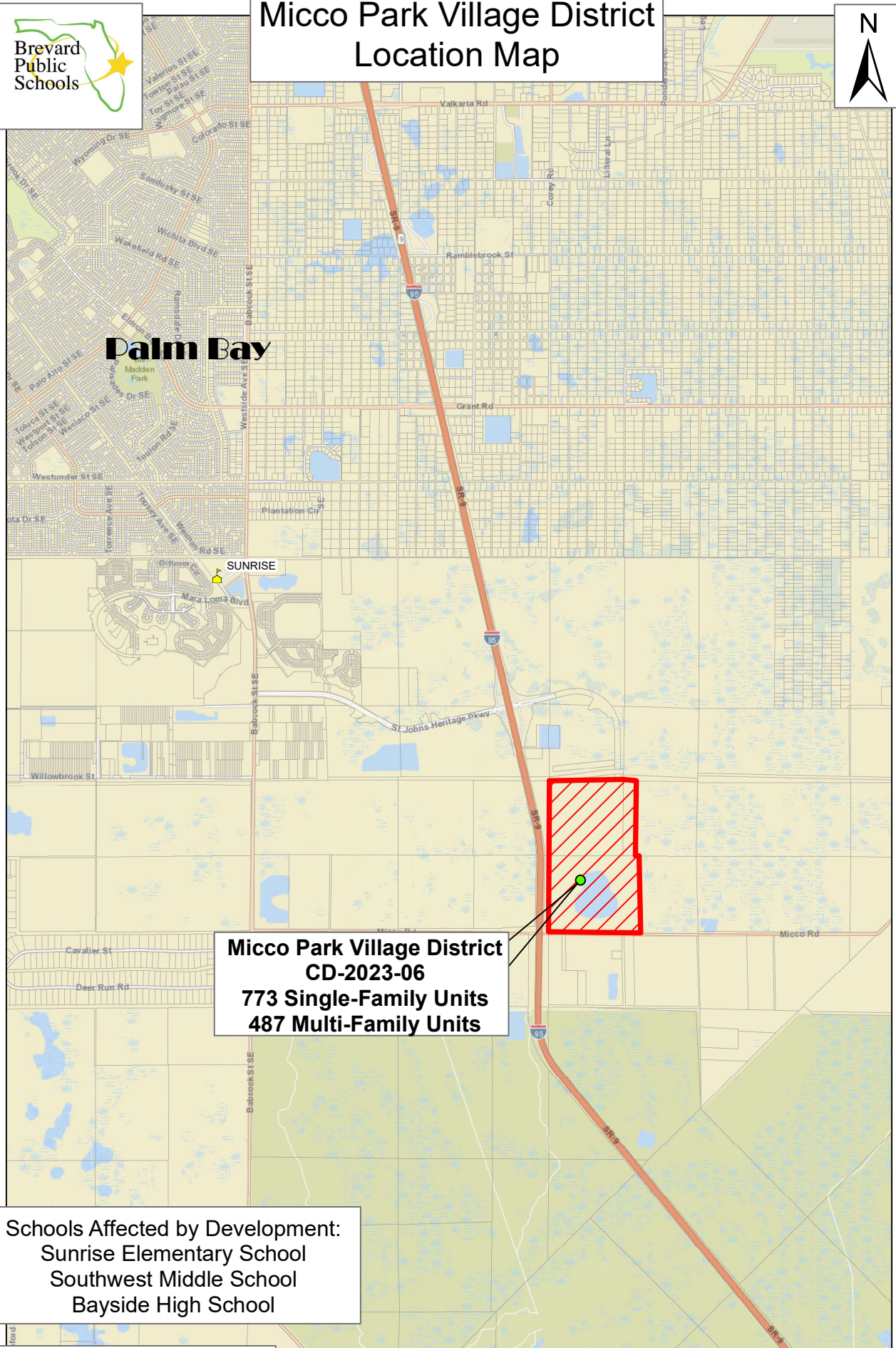
[MapView](#)[EagleView](#)

Owners:	PEAT HOLDING LLC <i>Wrong ownership? Maybe this is why...</i>
Mail Address:	7457 PARK LANE RD LAKE WORTH FL 33449
Site Address:	NONE
Parcel ID:	30-37-12-00-751
Taxing District:	34U0 - PALM BAY
2022 Exemptions:	NONE <i>Wrong exemption? Maybe this is why...</i>
Property Use:	6100 - GRAZING LAND - SOIL CAPABILITY CLASS II - VACANT
Total Acres:	18
Site Code:	0001 - NO OTHER CODE APPL.
Plat Book/Page:	0000/0000
Subdivision Name:	--
Land Description:	W 18 AC OF SE 1/4

[ATA Value](#)



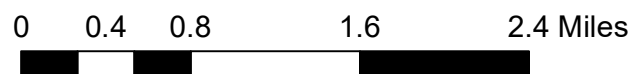
Micco Park Village District Location Map



**Micco Park Village District
CD-2023-06
773 Single-Family Units
487 Multi-Family Units**

Schools Affected by Development:
Sunrise Elementary School
Southwest Middle School
Bayside High School

Drawn By:
Planning & Project Management
Karen M. Black
Feb. 22, 2023



Plan To Maintain Utilization Rates Lower than the 100% Level of Service Data and Analysis for School Years 2022-23 to 2027-28

Summary				2022-23		2023-24		2024-25		2025-26		2026-27		2027-28	
Highest Utilization Elementary Schools:				93%		99%		100%		99%		99%		100%	
Highest Utilization Middle Schools:				88%		88%		94%		92%		94%		91%	
Highest Utilization Jr / Sr High Schools:				83%		83%		87%		78%		77%		76%	
Highest Utilization High Schools:				107%		99%		97%		98%		100%		100%	
School	Type	Grades	Utilization Factor	School Year 2022-23		School Year 2023-24		School Year 2024-25		School Year 2025-26		School Year 2026-27		School Year 2027-28	
				FISH Capacity	10/14/22 Member-ship	Future FISH Capacity	Student Projection	Total Capacity Utilization	Future FISH Capacity	Student Projection	Total Capacity Utilization	Future FISH Capacity	Student Projection	Total Capacity Utilization	Future FISH Capacity
Elementary School Concurrency Service Areas															
Allen	Elementary	Pk-6	100%	751	598	751	598	751	635	704	751	720	751	766	99%
Andersen	Elementary	K-6	100%	884	568	884	568	884	549	537	884	530	884	501	57%
Appolo	Elementary	K-6	100%	902	731	902	731	902	749	83%	902	736	902	718	80%
Atlanta	Elementary	Pk-6	100%	739	620	739	608	739	608	82%	739	565	739	572	77%
Audubon	Elementary	Pk-6	100%	761	450	761	450	761	435	57%	761	419	761	426	56%
Cambridge	Elementary	Pk-6	100%	787	495	787	495	787	511	65%	787	510	787	524	67%
Cape View	Elementary	Pk-6	100%	570	286	570	286	570	309	54%	570	315	570	329	56%
Carroll	Elementary	K-6	100%	751	626	751	633	751	643	86%	751	619	751	628	84%
Challenger 7	Elementary	Pk-6	100%	573	503	573	503	573	474	83%	573	438	573	413	72%
Cholla	Elementary	Pk-6	100%	751	506	751	512	751	531	71%	751	538	751	538	72%
Coquina	Elementary	K-6	100%	711	560	711	560	711	668	79%	711	590	711	585	82%
Creel	Elementary	Pk-6	100%	1,114	626	1,114	668	1,114	668	60%	1,114	667	1,114	658	59%
Croton	Elementary	Pk-6	100%	795	488	795	488	795	514	65%	795	542	795	542	68%
Discovery	Elementary	Pk-6	100%	980	643	980	664	980	675	69%	980	720	980	761	78%
Endeavour	Elementary	Pk-6	100%	968	719	968	717	968	717	74%	968	674	968	671	69%
Enterprise	Elementary	K-6	100%	729	597	729	597	729	578	79%	729	538	729	529	73%
Fairglenn	Elementary	Pk-6	100%	789	617	789	617	789	617	76%	789	635	789	625	79%
Gemini	Elementary	K-6	100%	711	477	711	477	711	465	65%	711	457	711	457	64%
Govfiew	Elementary	Pk-6	100%	777	441	777	441	777	460	59%	777	489	777	503	65%
Harbor City	Elementary	Pk-6	100%	829	403	829	405	829	457	73%	829	494	829	509	81%
Holland	Elementary	Pk-6	100%	805	432	805	450	805	444	75%	805	442	805	431	71%
Imperial Estates	Elementary	K-6	100%	729	659	729	684	729	712	98%	729	742	729	779	98%
Indianlake	Elementary	Pk-6	100%	798	686	798	686	798	685	86%	798	676	798	651	82%
Jupiter	Elementary	Pk-6	100%	930	729	930	735	930	801	86%	930	940	974	1,030	99%
Lockmar	Elementary	Pk-6	100%	892	565	892	565	892	569	64%	892	558	892	559	63%
Longleaf	Elementary	Pk-6	100%	790	631	790	631	790	590	75%	790	563	790	528	67%
Manatee	Elementary	K-6	100%	998	998	998	910	998	898	89%	998	898	998	881	88%
McAuliffe	Elementary	Pk-6	100%	838	621	838	580	838	568	68%	838	553	838	528	63%
Meadowlane Intermediate	Elementary	3-6	100%	1,114	825	1,114	825	1,114	779	70%	1,114	805	1,114	843	76%
Meadowlane Primary	Elementary	K-6	100%	824	668	824	660	824	690	80%	824	618	824	613	74%
Mila	Elementary	Pk-6	100%	707	435	707	435	707	396	55%	707	383	707	362	51%
Mims	Elementary	Pk-6	100%	725	464	725	464	725	481	66%	725	525	725	513	71%
Oak Park	Elementary	Pk-6	100%	968	505	968	505	968	478	49%	968	475	968	447	46%
Ocean Breeze	Elementary	Pk-6	100%	654	554	654	554	654	542	83%	654	534	654	531	81%
Palm Bay Elem	Elementary	Pk-6	100%	983	613	983	610	983	627	64%	983	630	983	636	65%
Pinewood	Elementary	Pk-6	100%	569	521	569	521	569	541	92%	569	513	569	500	98%
Port Malabar	Elementary	Pk-6	100%	852	640	852	683	852	746	88%	852	760	852	795	93%
Quest	Elementary	Pk-6	100%	932	693	932	684	932	681	73%	932	695	932	697	75%
Riviera	Elementary	Pk-6	100%	777	699	777	714	777	718	92%	777	827	777	866	98%
Roosevelt	Elementary	K-6	100%	599	288	599	289	599	296	43%	599	239	599	220	37%
Sabal	Elementary	Pk-6	100%	785	500	785	503	785	516	65%	785	535	785	535	67%
Saturn	Elementary	Pk-6	100%	998	649	998	649	998	821	82%	998	798	998	798	79%
Sea Park	Elementary	Pk-6	100%	461	337	461	327	461	321	70%	461	326	461	329	71%
Shenwood	Elementary	Pk-6	100%	609	459	609	458	609	459	75%	609	440	609	441	72%
Sunrise	Elementary	Pk-6	100%	913	767	913	836	935	908	97%	1,023	1,004	1,067	1,000	100%
Sunrise	Elementary	K-6	100%	755	602	755	561	755	541	72%	755	516	755	480	64%
Surfside	Elementary	K-6	100%	541	442	541	425	541	418	77%	541	417	541	407	75%
Tropical	Elementary	K-6	100%	910	669	910	614	910	600	66%	910	572	910	545	60%
Turner	Elementary	Pk-6	100%	874	555	874	589	874	647	74%	874	675	874	691	79%
University Park	Elementary	Pk-6	100%	811	487	811	545	811	592	73%	811	642	811	688	81%
Viera Elem	Elementary	K-6	100%	1,030	695	1,030	777	1,030	759	74%	1,030	926	1,030	1,061	99%
Westside	Elementary	K-6	100%	857	799	857	846	857	922	100%	857	988	857	1,100	100%
Williams	Elementary	Pk-6	100%	715	451	715	443	715	414	58%	715	475	715	451	58%
Elementary Totals				42,215	30,468	42,237	30,778	42,303	30,996	42,435	31,549	42,677	31,905	43,007	32,280

School	Type	Grades	Utilization Factor	School Year 2022-23			School Year 2023-24			School Year 2024-25			School Year 2025-26			School Year 2026-27			School Year 2027-28		
				FISH Capacity	10/14/22 Member-ship	Total Capacity Utilization	Future FISH Capacity	Student Projection	Total Capacity Utilization	Future FISH Capacity	Student Projection	Total Capacity Utilization	Future FISH Capacity	Student Projection	Total Capacity Utilization	Future FISH Capacity	Student Projection	Total Capacity Utilization	Future FISH Capacity	Student Projection	Total Capacity Utilization

Middle School Concurrency Service Areas

Central	Middle	7-8	90%	1,514	1,129	75%	1,514	1,158	76%	1,514	1,228	81%	1,514	1,289	85%	1,514	1,377	91%	1,514	1,377	91%
DeLaura	Middle	7-8	90%	960	842	88%	960	902	94%	960	820	85%	960	789	82%	960	826	86%	960	826	86%
Hoover	Middle	7-8	90%	680	505	74%	680	534	79%	680	574	84%	680	577	85%	680	588	86%	680	588	86%
Jackson	Middle	7-8	90%	680	550	83%	680	545	83%	680	538	82%	680	555	84%	680	568	89%	680	568	89%
Jefferson	Middle	7-8	90%	873	608	70%	873	600	69%	873	609	70%	873	563	64%	873	548	63%	873	548	63%
Johnson	Middle	7-8	90%	1,064	610	57%	1,064	650	61%	1,064	698	66%	1,064	753	71%	1,064	825	78%	1,064	825	78%
Kennedy	Middle	7-8	90%	869	671	77%	869	687	79%	869	670	77%	869	669	77%	869	677	78%	869	677	78%
Madison	Middle	7-8	90%	781	446	57%	781	484	62%	781	452	58%	781	476	61%	781	593	76%	781	593	76%
McNair	Middle	7-8	90%	616	365	59%	616	346	56%	616	354	57%	616	337	55%	616	347	56%	616	347	56%
Southwest	Middle	7-8	90%	1,230	920	75%	1,230	1,024	83%	1,230	1,127	92%	1,289	1,174	91%	1,289	1,285	100%	1,289	1,285	100%
Stone	Middle	7-8	90%	1,076	688	62%	1,076	799	74%	1,076	823	76%	1,076	890	83%	1,076	977	91%	1,076	977	91%
Middle Totals				10,323	7,314		10,323	7,729		10,323	7,893		10,382	8,072		10,382	8,631		10,382	8,631	

Junior / Senior High School Concurrency Service Areas

Cocoa	Jr / Sr High	PK, 7-12	90%	2,097	1,536	73%	2,097	1,555	74%	2,097	1,525	73%	2,097	1,518	72%	2,097	1,470	70%	2,097	1,470	70%
Cocoa Beach	Jr / Sr High	7-12	90%	1,445	983	68%	1,445	1,000	69%	1,445	941	65%	1,445	928	64%	1,445	867	60%	1,445	867	60%
Space Coast	Jr / Sr High	7-12	90%	1,852	1,534	83%	1,852	1,505	81%	1,852	1,450	78%	1,852	1,428	77%	1,852	1,402	76%	1,852	1,402	76%
Jr / Sr High Totals				5,394	4,062		5,394	4,060		5,394	3,916		5,394	3,874		5,394	3,739		5,394	3,739	

Senior High School Concurrency Service Areas

Astronaut	High	9-12	95%	1,451	1,109	76%	1,451	1,123	77%	1,451	1,129	78%	1,451	1,164	80%	1,451	1,158	80%	1,451	1,158	80%
Bayside	High	9-12	95%	2,263	1,851	82%	2,263	2,023	89%	2,263	2,089	93%	2,263	2,175	96%	2,263	2,371	100%	2,263	2,371	100%
Eau Gallie	High	PK, 9-12	95%	2,221	1,582	71%	2,221	1,597	72%	2,221	1,625	73%	2,221	1,631	73%	2,221	1,693	76%	2,221	1,693	76%
Heritage	High	9-12	95%	2,314	2,033	88%	2,314	2,065	89%	2,314	2,057	89%	2,314	2,099	91%	2,314	2,171	94%	2,314	2,171	94%
Melbourne	High	9-12	95%	2,370	2,245	95%	2,370	2,245	95%	2,370	2,248	95%	2,370	2,284	96%	2,370	2,345	99%	2,370	2,345	99%
Merritt Island	High	PK, 9-12	95%	1,962	1,546	79%	1,962	1,512	77%	1,962	1,457	74%	1,962	1,437	73%	1,962	1,454	74%	1,962	1,454	74%
Palm Bay	High	PK, 9-12	95%	2,657	1,483	56%	2,657	1,581	60%	2,657	1,683	63%	2,657	1,704	64%	2,657	1,700	64%	2,657	1,700	64%
Rockledge	High	9-12	95%	1,836	1,559	85%	1,836	1,640	89%	1,836	1,699	93%	1,836	1,693	92%	1,836	1,620	88%	1,836	1,620	88%
Satellite	High	PK, 9-12	95%	1,551	1,536	99%	1,551	1,433	92%	1,551	1,413	91%	1,551	1,359	88%	1,551	1,299	84%	1,551	1,299	84%
Titusville	High	9-12	95%	1,813	1,313	72%	1,813	1,335	74%	1,813	1,351	75%	1,813	1,316	73%	1,813	1,322	73%	1,813	1,322	73%
Viera	High	PK, 9-12	95%	2,141	2,288	107%	2,141	2,391	97%	2,141	2,417	98%	2,141	2,579	100%	2,141	2,660	100%	2,141	2,660	100%
High Totals				22,555	18,528		22,912	18,945		22,912	19,178		23,007	19,441		23,221	19,793		23,221	19,793	

Schools of Choice (Not Concurrency Service Areas)

Freedom 7	Elementary	K-6	100%	475	403	85%	475	414	87%	475	414	87%	475	414	87%	475	414	87%	475	414	87%
Stevenson	Elementary	K-6	100%	569	508	89%	569	508	89%	569	508	89%	569	508	89%	569	508	89%	569	508	89%
South Lake	Elementary	K-6	100%	481	434	90%	481	434	90%	481	434	90%	481	434	90%	481	434	90%	481	434	90%
West Melbourne	Elementary	K-6	100%	618	552	89%	618	552	89%	618	552	89%	618	552	89%	618	552	89%	618	552	89%
Edgewood	Jr / Sr High	7-12	90%	1,077	938	87%	1,077	950	88%	1,077	950	88%	1,077	950	88%	1,077	950	88%	1,077	950	88%
West Shore	Jr / Sr High	7-12	90%	1,264	930	74%	1,264	950	75%	1,264	950	75%	1,264	950	75%	1,264	950	75%	1,264	950	75%
Schools of Choice				4,484	3,760		4,484	3,827		4,484	3,863		4,484	3,899		4,484	3,975		4,484	3,975	
Brevard Totals				84,971	64,132		85,526	64,706		85,768	65,593		86,296	67,227		86,840	68,418		86,840	68,418	

Notes

- FISH Capacity is the sum of the factored permanent capacity and the factored relocatable capacity. Permanent and relocatable capacities for 2022-23 are reported from the FISH database as of October 14, 2022.
- Student Membership is reported from the Fall Final Membership Count (10/14/2022).
- Davis Demographics SchoolSite Enrollment Forecasting Extension for ArcGIS estimates future student populations by analyzing the following data:
 - Development Projections from Brevard County Local Government Jurisdictions
 - Brevard County School Concurrency Student Generation Multipliers (SGM)
 - Student Mobility Rates / Cohort Survival Rates
 - Brevard County Birth rates by zip code
- Davis Demographics estimates are then adjusted using the following factors:
 - PK (Pre-Kindergarten) and AH (daycare for students with infants) enrollment number are assumed to be constant
 - Current From/To attendance patterns are assumed to remain constant.
 - Nonrelocated student addresses are assumed to continue in their attendance schools.
 - Charter School Growth.
- In order to maintain utilization rates lower than the 100% Level of Service, Permanent Capacity and Relocatable Classrooms are assumed to add future student stations as necessary.
- If student projections are accurate, the school board could add additional classroom capacity, implement attendance boundary changes, or add relocatable classrooms. A south area elementary school is planned for the future growth, but the exact timing hasn't been established. If only relocatable classrooms are used for the next 5 years, the following changes would be needed to accommodate projected growth. These schools are being analyzed for the best options to accommodate additional students.
 - Primary relocatable classrooms (Grades K-3) = 19 student stations, Intermediate (Grades 4-8) relocatable classrooms = 22 student stations, and High School (Grades 9-12) relocatable classrooms = 25 student stations
- For school year 2023-24, no additional capacity is needed. For school year 2024-25, a total of 3 intermediate classrooms are projected for Westside Elementary School For school year 2025-26, a total of 6 intermediate classrooms are projected for Pinewood (1), Riviera (1), Sunrise (1) and Westside (3) Elementary Schools. For school year 2026-27, a total of 14 intermediate classrooms are projected for Imperial Estates (1), Jupiter (2), Riviera (2), Sunrise (2), Viera El (2), Westside (2) Elementary Schools, and Southwest Middle School (3). 4 High School relocatable classrooms are proposed for Viera High School. For school year 2027-28, a total of 15 intermediate classrooms are projected for Roy Allen (1), Imperial Estates (2), Jupiter (3), Riviera (2), Viera El (2), Sunrise (2), and Westside (3) Elementary Schools, 9 High School relocatable classrooms are proposed for Bayside (5) and Viera (4) High School. A classroom addition is planned for construction at Viera High School for 2023-24. The factored capacity is adjusted for the proposed 350 student stations.
- A classroom addition is planned for construction at South Lake Elementary School for 2023-24. The factored capacity is adjusted for the proposed 176 student stations.
- A classroom addition is planned for construction at West Melbourne School of Science for 2024-25. The factored capacity is adjusted for the proposed 176 student stations.
- Capacity adjusted for Board approved addition of one relocatable each at Pinewood Elementary and Satellite High Schools for school year 2024-25 forward.