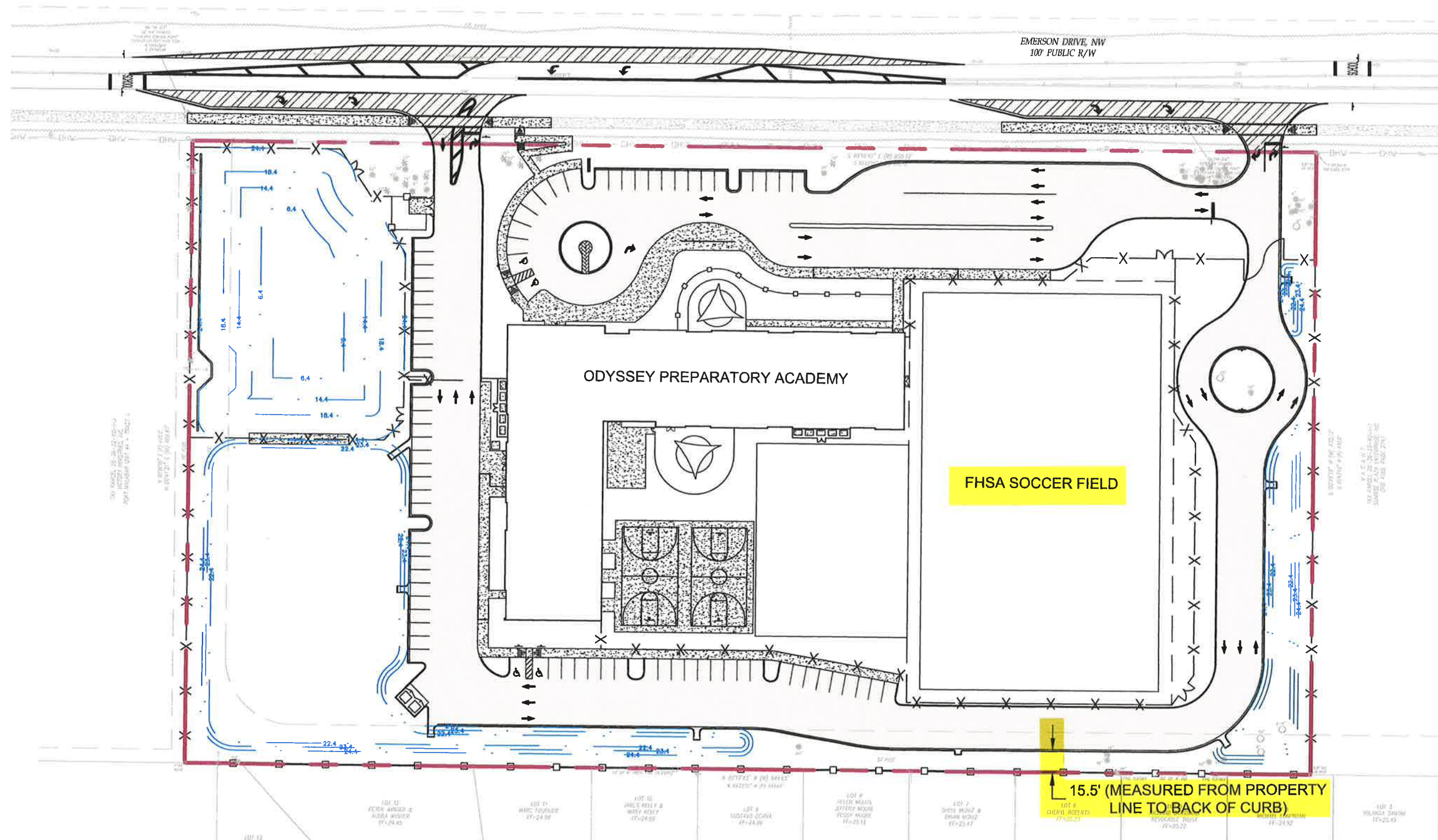


NOTE:  
NC ZONING REQUEST MINIMUM  
PAVEMENT SETBACK REDUCED  
FROM 25' TO 15.5'

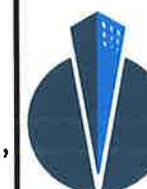


ODYSSEY PREPARATORY ACADEMY  
PAVEMENT SETBACK VARIANCE EXHIBIT

1"=80'



04-01-24 OPAV-01



**CONSTRUCTION  
ENGINEERING  
GROUP**  
Consulting Engineers

2651 Eau Gallie Blvd., Suite A  
Melbourne, FL 32935  
Tel. 321.253.1221  
www.ceengineering.com  
COA #0008097



